



NIBE™ F1155/F1255

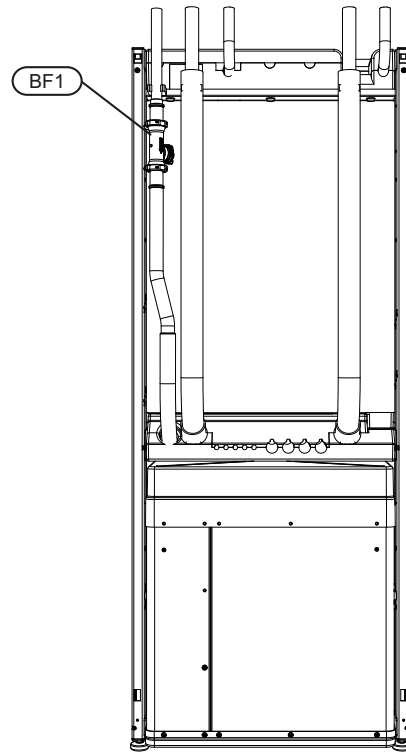
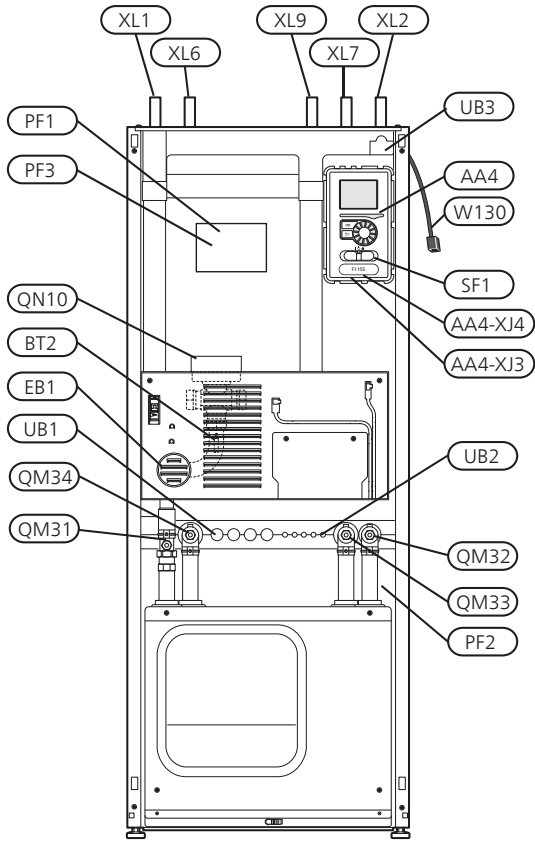
- Ⓞ SE Elschema
- Ⓞ GB Wiring diagram
- Ⓞ DE Elektrischer Schaltplan

Innehållsförteckning

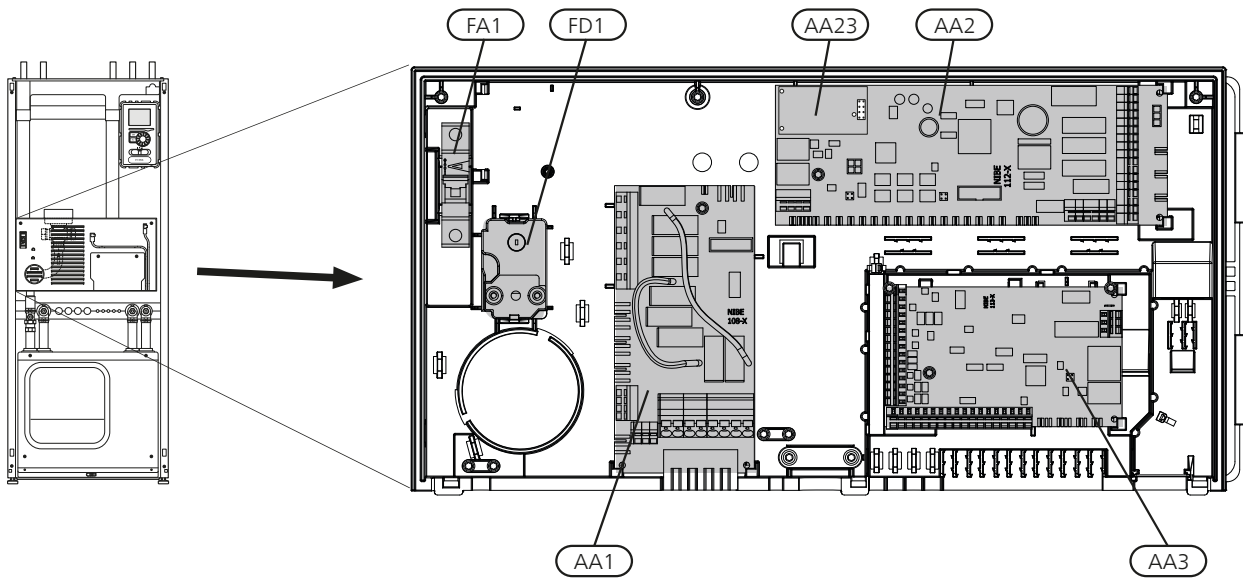
1 Komponentplacering – Component locations – Position der Komponenten _____	2	3 Elschema – Wiring diagram – Elektrischer Schaltplan _____	12
F1155 _____	2	1x230V F1155-6/F1255-6 _____	12
F1255 _____	5	3x230V F1155-6/F1255-6 _____	18
		3x400V F1155-6/F1255-6 _____	24
2 Översättningstabell – Translation table – Übersetzungstabelle _____	8	3x400V F1155-16/F1255-16 _____	30

1 Komponentplacering – Component locations – Position der Komponenten

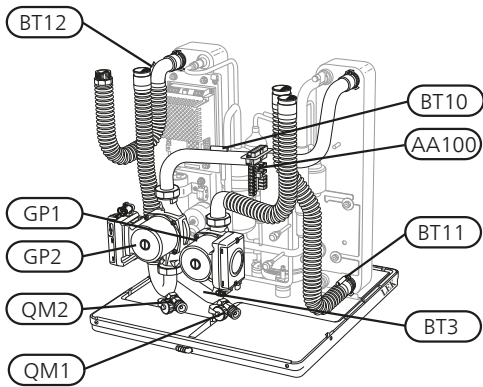
F1155



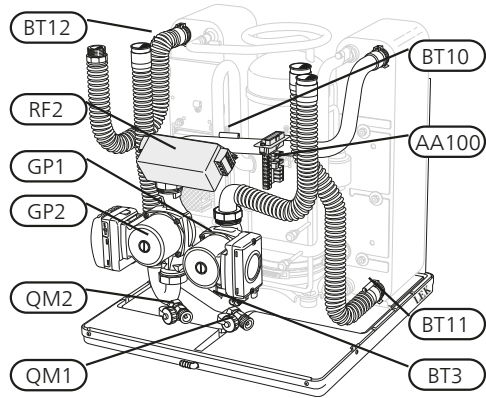
Only F1155 EM.



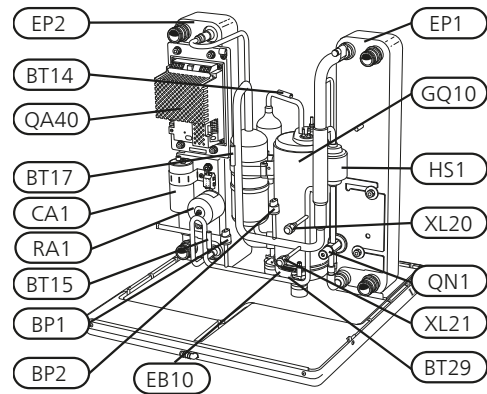
6 kW



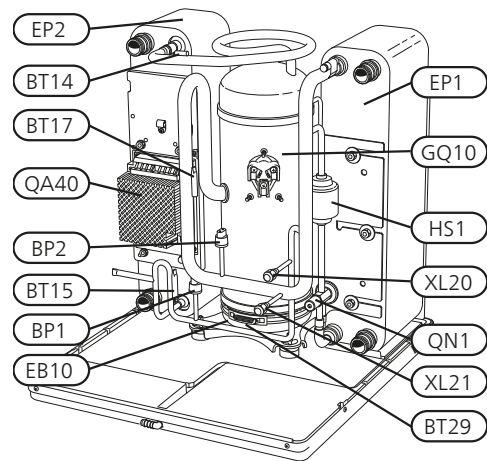
16 kW



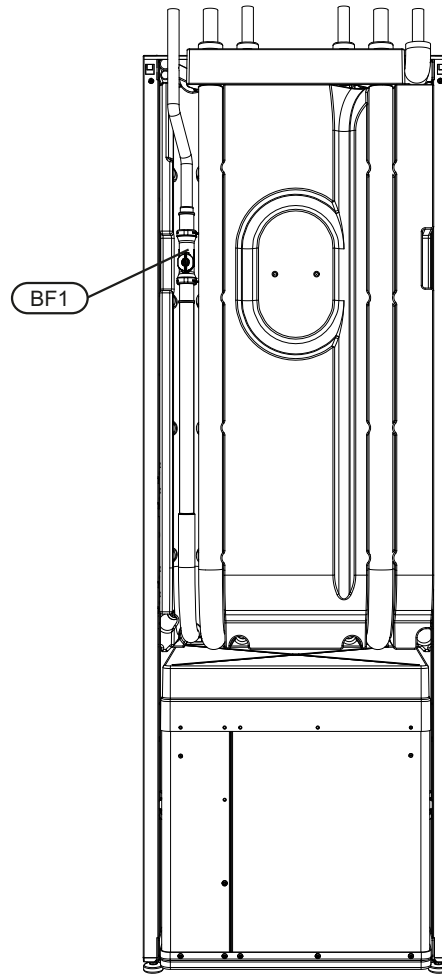
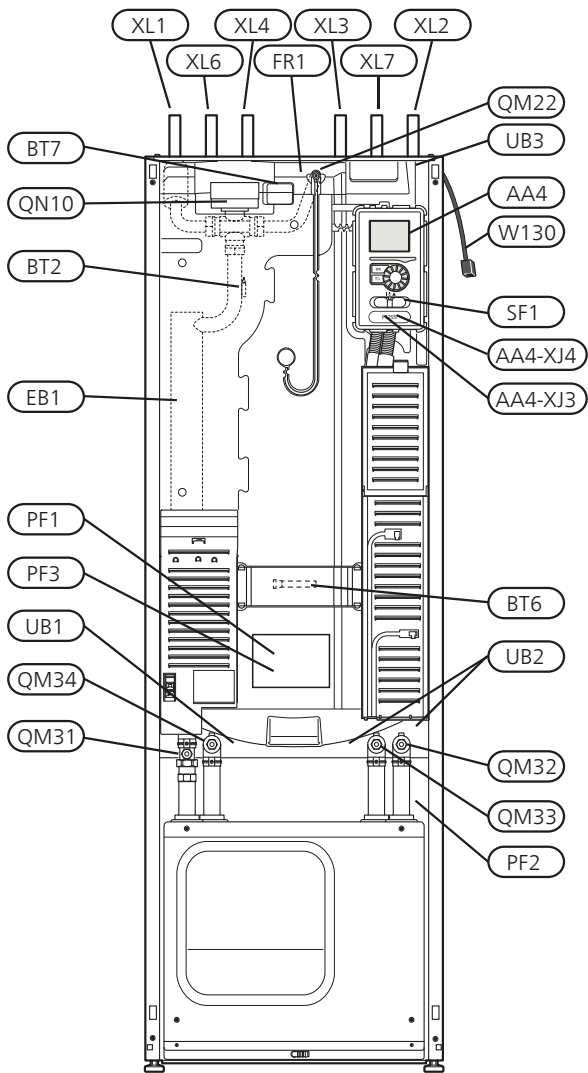
6 kW



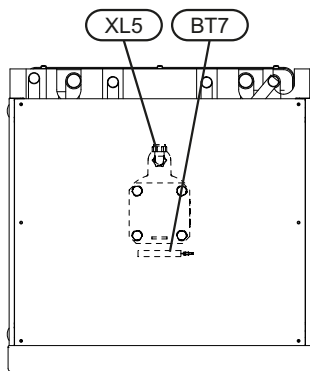
16 kW

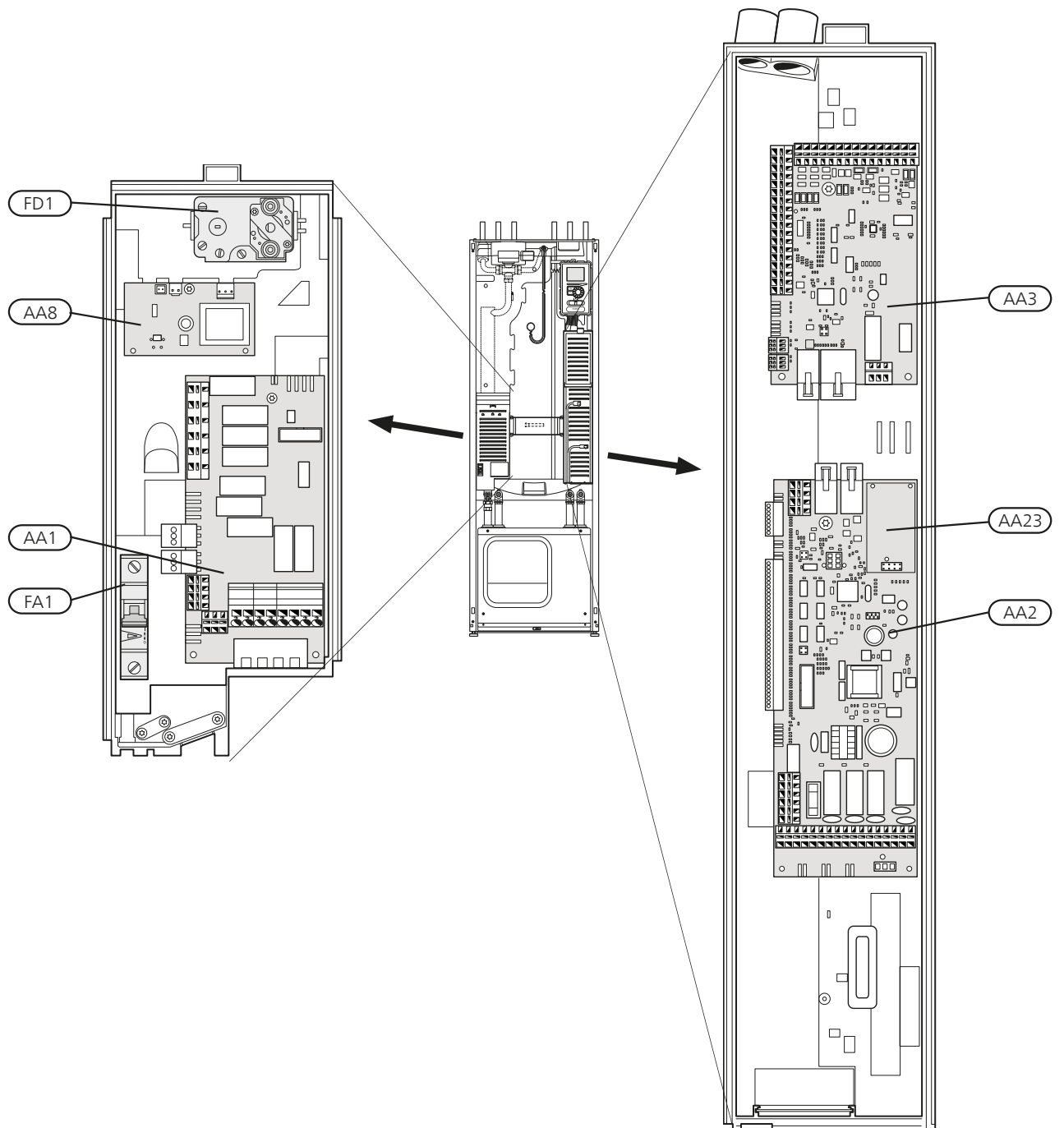


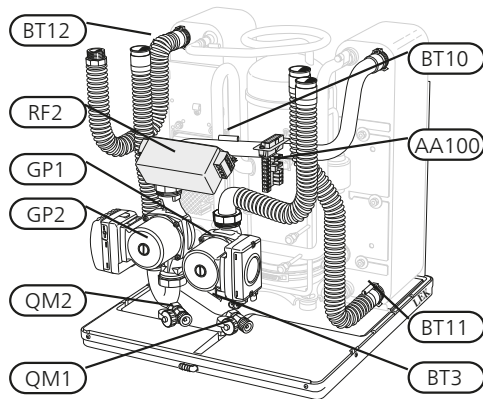
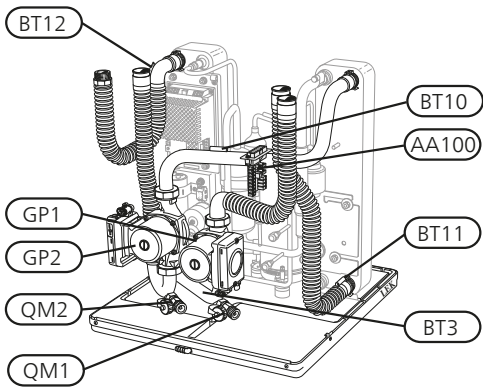
F1255



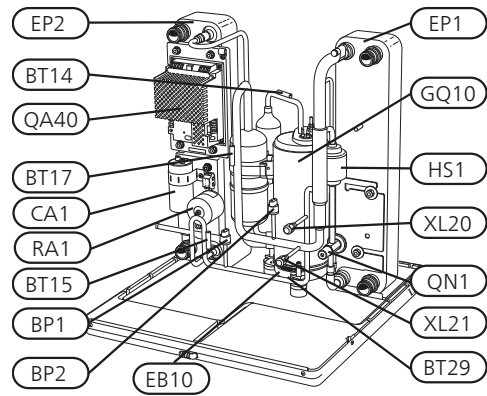
Only F1255 EM.



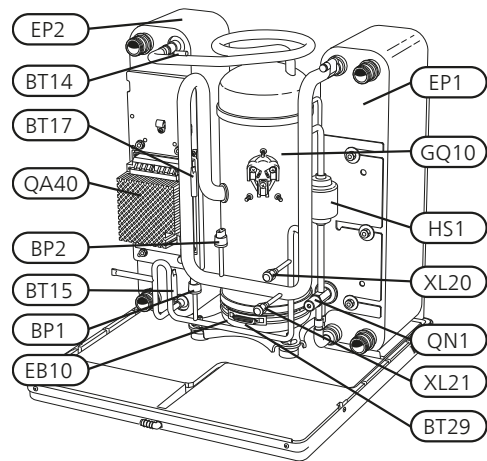




6 kW



16 kW



2 Översättningstabell – Translation table – Übersetzungstabelle

	GB	SE	DE
AA 1	Immersion heater card	Elpatronskort	Heizpatronenkarte
AA 2	Base card	Grundkort	Grundkarte
AA 3	Input circuit board	Ingångskort	Eingangskarte
AA 4	Display unit AA4-XJ3 USB outlet (no function) AA4-XJ4 Service outlet (No function)	Displayenhet AA4-XJ3 USB-uttag (ingen funktion) AA4-XJ4 Serviceuttag (ingen funktion)	Bedienfeld AA4-XJ3 USB-Anschluss (keine Funktion) AA4-XJ4 Serviceanschluss (keine Funktion)
AA 8	Sacrificial anode card	Elanodskort	Fremdstromanodenkarte
AA 23	Communication board	Kommunikationskort	Kommunikationskarte
AA 100	Joint card	Skarvkort	Verbindungskarte
BF 1	Flow meter (optional)	Flödesmätare (valbar)	Durchflußmesser (optional)
BP 1	High pressure pressostat	Högtryckspressostat	Hochdruckpressostat
BP 2	Low pressure pressostat	Lågtryckspressostat	Niederdruckpressostat
BT 2	Temperature sensors, heating medium flow	Temperaturgivare, värmebärande fram	Temperaturfühler, Heizungsvorlauf
BT 3	Temperature sensors, heating medium return	Temperaturgivare, värmebärande retur	Temperaturfühler, Heizungsrücklauf
BT 6	Temperature sensor, hot water charging	Temperaturgivare, varmvattenladdning	Temperaturfühler, Brauchwasserbereitung
BT 7	Temperature sensor, hot water top	Temperaturgivare, varmvatten topp	Temperaturfühler, Brauchwasser oben
BT 10	Temperature sensor, brine in	Temperaturgivare, köldbärande in	Temperaturfühler, Wärmequellenmedium ein
BT 11	Temperature sensor, brine out	Temperaturgivare, köldbärande ut	Temperaturfühler, Wärmequellenmedium aus
BT 12	Temperature sensor, condenser supply line	Temperaturgivare, kondensator framledning	Vorlauftemperaturfühler, Kondensator
BT 14	Temperature sensor, hot gas	Temperaturgivare, hetgas	Heißgasfühler
BT 15	Temperature sensor, fluid pipe	Temperaturgivare, vätskeledning	Flüssigkeitsleitungsfühler
BT 17	Temperature sensor, suction gas	Temperaturgivare, suggas	Sauggasfühler
BT 29	Temperature sensor, compressor	Temperaturgivare, kompressor	Fühler, Verdichter
CA 1	Capacitor	Kondensator	Kondensator
EB 1	Immersion heater	Elpatron	Heizpatrone
EB 10	Compressor heater	Kompressorvärmare	Verdichtererwärmer
EP 1	Evaporator	Förångare	Verdampfer
EP 2	Condenser	Kondensator	Kondensator
FA 1	Miniature circuit-breaker	Automatsäkring	Sicherungsautomat
FD 1	Temperature limiter/Emergency mode thermostat	Temperaturbegränsare/Reservlägesthermostat	Temperaturbegrenzer/
FR 1	Sacrificial anode	Elanod	Fremdstromanode
GP 1	Circulation pump	Värmebärandepump	Heizkreispumpe
GP 2	Brine pump	Köldbärandepump	Wärmequellenpumpe
GQ 10	Compressor	Kompressor	Verdichter
HS 1	Drying filter	Torkfilter	Trockenfilter
PF 1	Rating plate	Dataskylt	Datenschild
PF 2	Type plate, cooling section	Typskylt kyladel	Typenschild Kältemodul
PF 3	Serial number plate	Seriennummerskylt	Seriennummerschild
QA 40	Inverter	Inverter	Inverter

	GB	SE	DE
QM 1	Drainage, climate system	Avtappning, klimatsystem	Entleerung, Heizsystem
QM 2	Draining, brine side	Avtappning, köldbärarsystem	Entleerung, Wärmequellensystem
QM 22	Venting, coil	Avluftning, slinga	Entlüftung, Rohrwärmeübertrager
QM 31	Shut off valve, heating medium flow	Avstängningsventil, värmebärare fram	Absperrventil, Heizungsvoorlauf
QM 32	Shut off valve, heating medium return	Avstängningsventil, värmebärare retur	Absperrventil, Heizungsrücklauf
QM 33	Shut off valve, brine out	Avstängningsventil, köldbärare ut	Absperrventil, Wärmequellenmedium aus
QM 34	Shut-off valve, brine in	Avstängningsventil, köldbärare in	Absperrventil, Wärmequellenmedium ein
QN 1	Expansion valve	Expansionsventil	Expansionsventil
QN 10	Shuttle valve, climate system/water heater	Växelventil, klimatsystem/varmvattenberedare	Umschaltventil, Heizsystem/Brauchwasserspeicher
RA 1	Choke	Drossel	Drossel
RF 2	EMC-filter	EMC-filter	EMV-filter
SF 1	Switch	Strömställare	Betriebsschalter
UB 1	Cable gland, incoming electricity	Kabelgenomföring, inkommande el	Kabeldurchführung, Stromversorgung
UB 2	Cable gland	Kabelgenomföring	Kabeldurchführung
UB 3	Cable gland, rear side, sensor	Kabelgenomföring, baksida, givare	Kabeldurchführung, Rückseite, Fühler
W 130	Network cable for NIBE Uplink™	Nätverkskabel för NIBE Uplink™	Netzwerkkabel für NIBE Uplink™
XL 1	Connection, heating medium flow	Anslutning, värmebärare fram	Anschluss, Heizungsvoorlauf
XL 2	Connection, heating medium return	Anslutning, värmebärare retur	Anschluss, Heizungsrücklauf
XL 3	Connection, cold water	Anslutning, kallvatten	Kaltwasseranschluss
XL 4	Connection, hot water (F1255)	Anslutning, varmvatten (F1255)	Anschluss, Brauchwasser (F1255)
XL 5	Connection, HWC	Anslutning, VVC	Anschluss BWZ
XL 6	Connection, brine in	Anslutning, köldbärare in	Anschluss, Wärmequellenmedium ein
XL 7	Connection, brine out	Anslutning, köldbärare ut	Anschluss, Wärmequellenmedium aus
XL 9	Connecting, hot water heater (F1155)	Anslutning, varmvattenberedare (F1155)	Anschluss, Brauchwasserspeicher (F1155)
XL 20	Service connection, high pressure	Serviceanslutning, högtryck	Wartungsanschluss, Hochdruck
XL 21	Service connection, low pressure	Serviceanslutning, lågtryck	Wartungsanschluss, Niederdruck

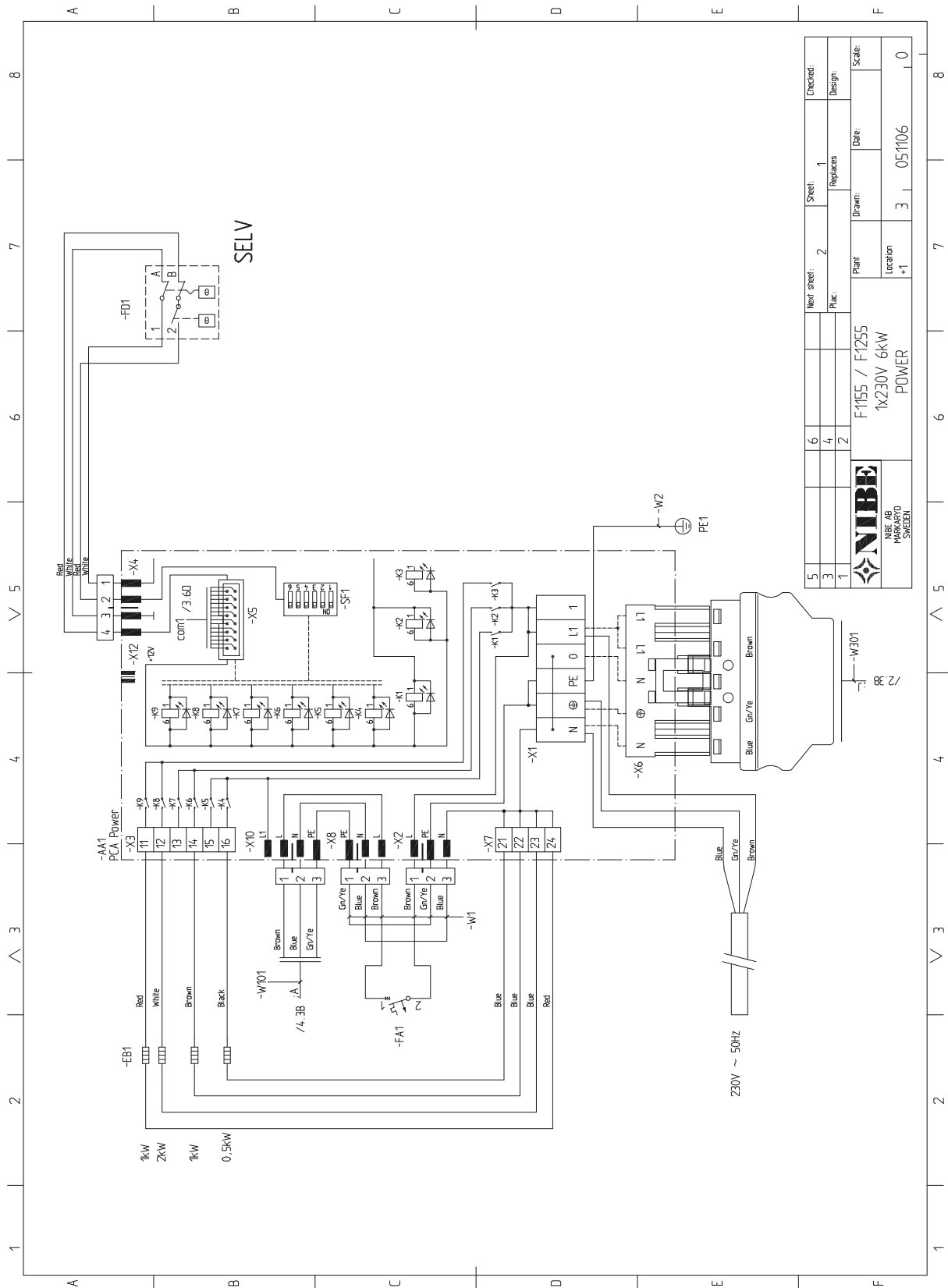
	GB	FI	NO
AA 1	Immersion heater card	Sähkövastuskortti	El-patronkort
AA 2	Base card	Peruskortti	Grunnkort
AA 3	Input circuit board	Tulokortti	Inngangskort
AA 4	Display unit	Näyttö	Displayenhet
	AA4-XJ3 USB outlet (no function)	AA4-XJ3 USB-liitäntä (ei toimintoa)	AA4-XJ3 USB-uttak (ingen funksjon)
	AA4-XJ4 Service outlet (No function)	AA4-XJ4 Huoltoliitäntä (ei toimintoa)	AA4-XJ4 Serviceuttak (ingen funksjon)
AA 8	Sacrificial anode card	Sähköanodikortti	El-anodekort
AA 23	Communication board	Tiedonsiirtokortti	Kommunikasjonskort
AA 100	Joint card	Liitoskortti	Koplingskort
BF 1	Flow meter (optional)	Virtausmittari (valinnainen)	Volumstrømmåler (valgbar)
BP 1	High pressure pressostat	Ylipaineensäädin	Høytrykkspressostat

	GB	FI	NO
BP 2	Low pressure pressostat	Alipaineensäädin	Lavtrykkspressostat
BT 2	Temperature sensors, heating medium flow	Lämpötilan anturi, lämpöjohto meno	Temperaturføler, varmebærer tur
BT 3	Temperature sensors, heating medium return	Lämpötilan anturi, lämpöjohto paluu	Temperaturføler, varmebærer retur
BT 6	Temperature sensor, hot water charging	Lämpötilan anturi, käyttöveden tuotanto	Temperaturføler, varmtvannsoppvarming
BT 7	Temperature sensor, hot water top	Lämpötilan anturi, käyttövesi huippu	Temperaturføler, varmtvannstopp
BT 10	Temperature sensor, brine in	Lämpötilan anturi, lämmönkeruu paluu	Temperaturføler, kuldebærer inn
BT 11	Temperature sensor, brine out	Lämpötilan anturi, lämmönkeruu meno	Temperaturføler, kuldebærer ut
BT 12	Temperature sensor, condenser supply line	Lämpötila-anturi, lauhduttimen menojohto	Temperaturføler, kondensator turledning
BT 14	Temperature sensor, hot gas	Lämpötila-anturi, kuumakaasu	Temperaturføler, hetgass
BT 15	Temperature sensor, fluid pipe	Lämpötila-anturi, käyttövesi	Temperaturføler, væskeledning
BT 17	Temperature sensor, suction gas	Lämpötila-anturi, imukaasu	Temperaturføler, sugegass
BT 29	Temperature sensor, compressor		
CA 1	Capacitor	Kondensaattori	Kondensator
EB 1	Immersion heater	Sähkövastus	El-patron
EB 10	Compressor heater	Kompressorilämmitin	Kompressorvarmer
EP 1	Evaporator	Höyrystin	Fordamper
EP 2	Condenser	Lauhdutin	Kondensator
FA 1	Miniature circuit-breaker	Automaattivaroke	Automatsikring
FD 1	Temperature limiter/Emergency mode thermostat	Lämpötilanrajoitin/varatilatermostaatti	Temperaturbegrenser/Reservestillingstermostat
FR 1	Sacrificial anode	Sähköanodi	Elanode
GP 1	Circulation pump	Lämpöjohtopumppu	Varmebærerpumpe
GP 2	Brine pump	Lämmönkeruupumppu	Kuldebærerpumpe
GQ 10	Compressor	Kompressori	Kompressor
HS 1	Drying filter	Kuivaussuodatin	Tørkefilter
PF 1	Rating plate	Tyypikilpi	Typeskilt
PF 2	Type plate, cooling section	Tyypikilpi, kylmäosa	Typeskilt kjøledele
PF 3	Serial number plate	Laitekilpi	Serienummerskilt
QA 40	Inverter	Invertteri	Inverter
QM 1	Drainage, climate system	Tyhjennys, lämmitysjärjestelmä	Avtapping, klimasystem
QM 2	Draining, brine side	Tyhjennys, lämmönkeruupuoli	Avtapping, kuldebærersystem
QM 22	Venting, coil	Ilmaus, silmukka	Avlufting, slynge
QM 31	Shut off valve, heating medium flow	Sulkuventtiili, lämmitysvesi meno	Avstengingsventil, varmebærer tur
QM 32	Shut off valve, heating medium return	Sulkuventtiili, lämpöjohto paluu	Avstengingsventil, varmebærer retur
QM 33	Shut off valve, brine out	Sulkuventtiili, lämmönkeruuliuos meno	Avstengingsventil, kuldebærer ut
QM 34	Shut-off valve, brine in	Sulkuventtiili, lämmönkeruu paluu	Avstengingsventil, kuldebærer inn
QN 1	Expansion valve	Paisuntaventtiili	Ekspansjonsventil
QN 10	Shuttle valve, climate system/water heater	Vaihtoventtiili, lämmitysjärjestelmä/lämmövesivaraaja	Vekselventil, klimasystem/varmtvannsbereder
RA 1	Choke	Kuristin	Drossel
RF 2	EMC-filter	EMC-suodatin	EMC-filter
SF 1	Switch	Katkaisin	Strømbryter

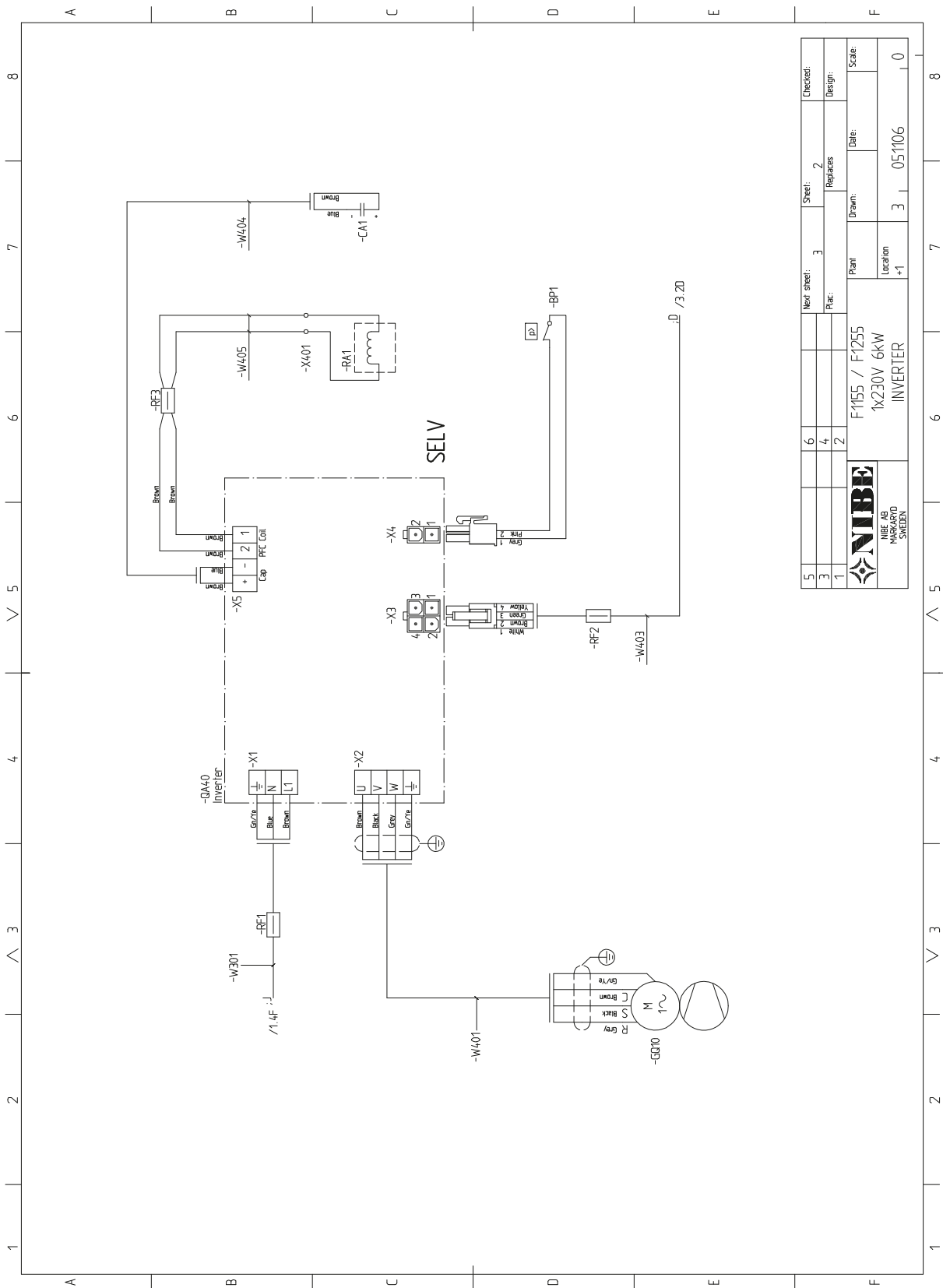
	GB	FI	NO
UB 1	Cable gland, incoming electricity	Kaapeliläpivienti, syöttökaapelil	Kabelgjennomføring, innkommende strøm
UB 2	Cable gland	Kaapeliläpivienti	Kabelgjennomføring
UB 3	Cable gland, rear side, sensor	Kaapeliläpivienti, takapuoli, anturit	Kabelgjennomføring, bakside, føler
W 130	Network cable for NIBE Uplink™	Verkkokaapeli NIBE Uplink™	Nettverkskabel for NIBE Uplink™
XL 1	Connection, heating medium flow	Liitäntä, lämpöjohto meno	Tilkopling, varmebærer tur
XL 2	Connection, heating medium return	Liitäntä, lämpöjohto paluu	Tilkopling, varmebærer retur
XL 3	Connection, cold water	Liitäntä, kylmävesi	Tilkopling, kaldtvann
XL 4	Connection, hot water (F1255)	Liitäntä, käyttövesi (F1255)	Tilkopling, varmtvann (F1255)
XL 5	Connection, HWC	Liitäntä, VVC	Tilkopling, VVC
XL 6	Connection, brine in	Liitäntä, lämmönkeruu tulo	Tilkopling, kuldebærer inn
XL 7	Connection, brine out	Liitäntä, lämmönkeruu meno	Tilkopling, kuldebærer ut
XL 9	Connecting, hot water heater (F1155)	Liitäntä, lämminvesivaraaja (F1155)	Tilkopling, varmtvannsbereder (F1155)
XL 20	Service connection, high pressure	Huoltoliitäntä, ylipaine	Servicetilkopling, høytrykk
XL 21	Service connection, low pressure	Huoltoliitäntä, alipaine	Servicetilkopling, lavtrykk


3 Elscheman – Wiring diagram – Elektrischer Schaltplan

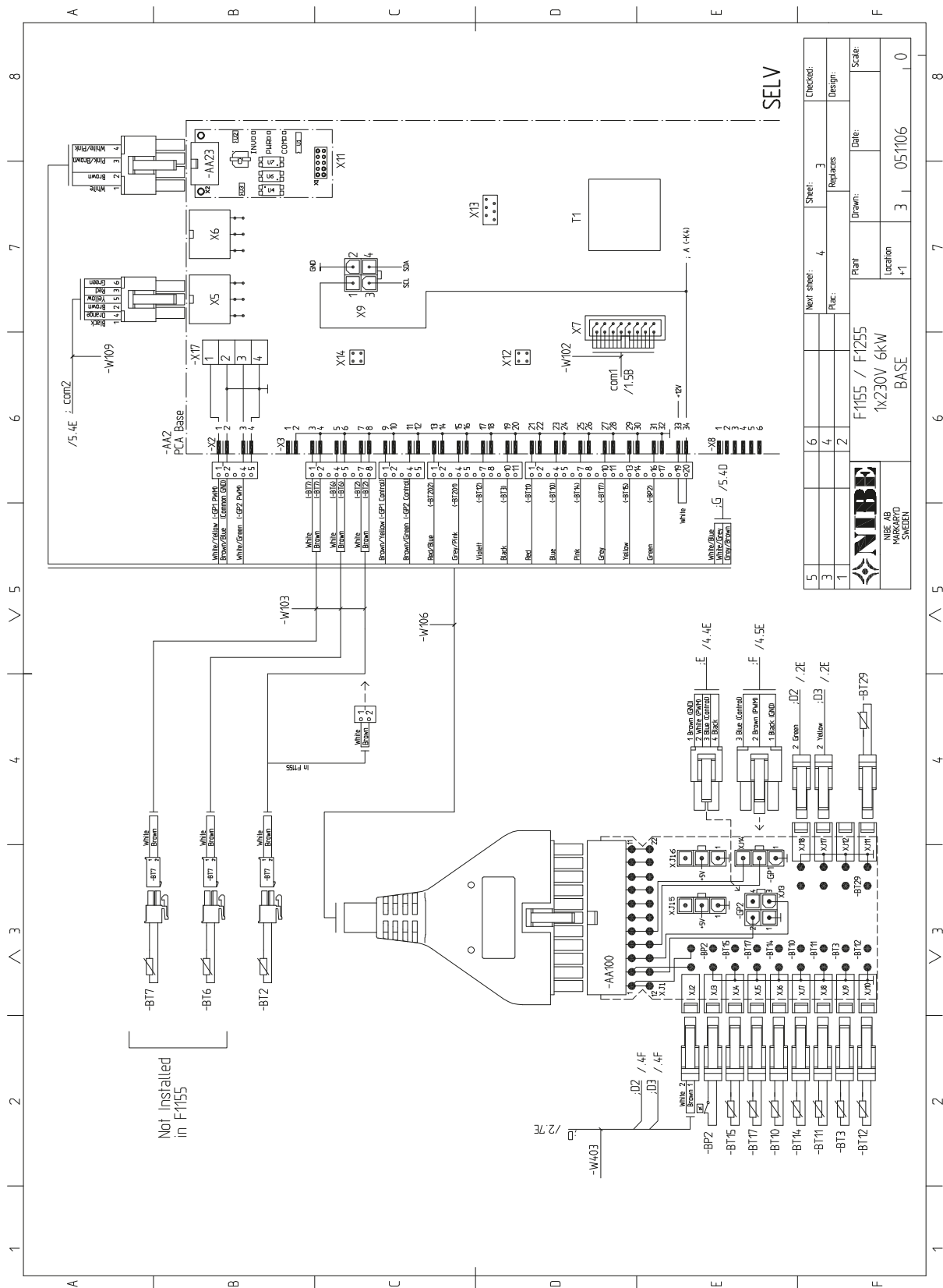
1x230V F1155-6/F1255-6



5	6	7	8
Next sheet: 2	Sheet: 1	Replaces:	Checked:
Plac:	2	Drawn:	Design:
		Date:	Scale:
		Plant:	
		Location:	
		F1155 / F1255	05/106
		1x230V 6KW	0
		POWER	
 NIBE AB MARKARYD SWEDEN			

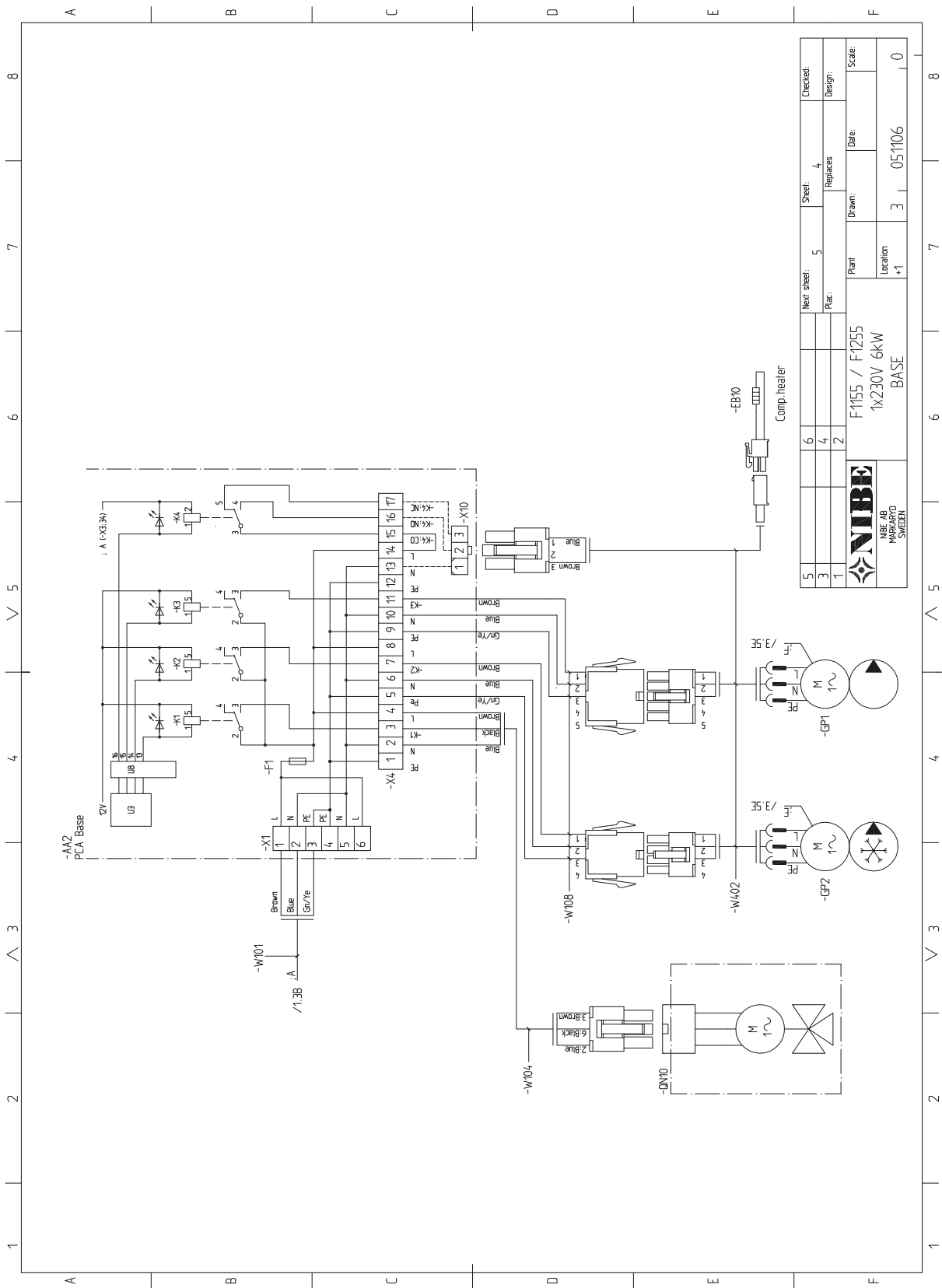


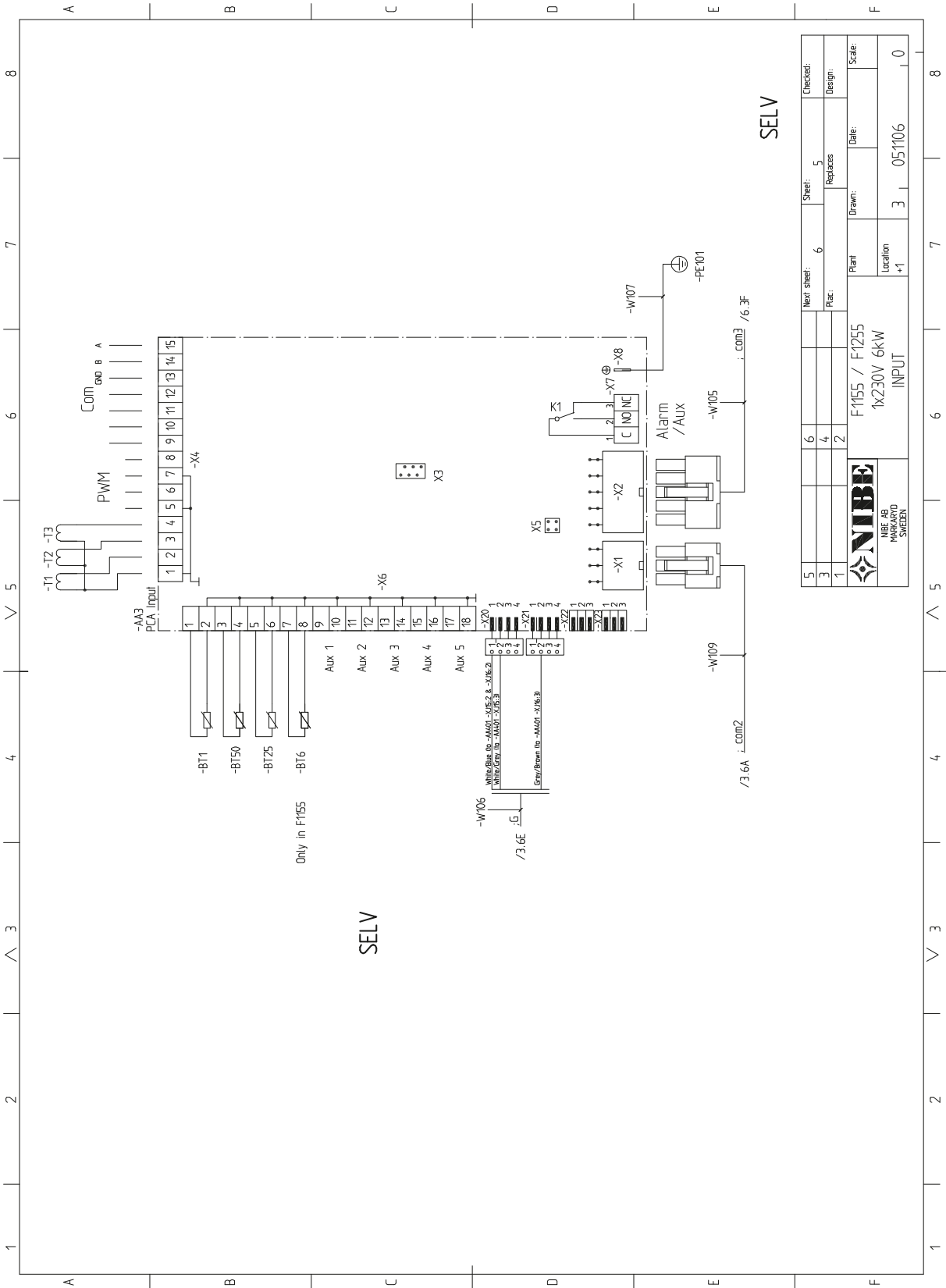
5	Next sheet:	3	Sheet:	2	Checked:
3	Replaces:				Design:
1	Plant:	F1155 / F1255	Drawn:		Scale:
 NIBE AB NIBE AB SWEDEN		Location:	+1	Date:	05/11/06
		INVERTER			0




Not installed in F1155

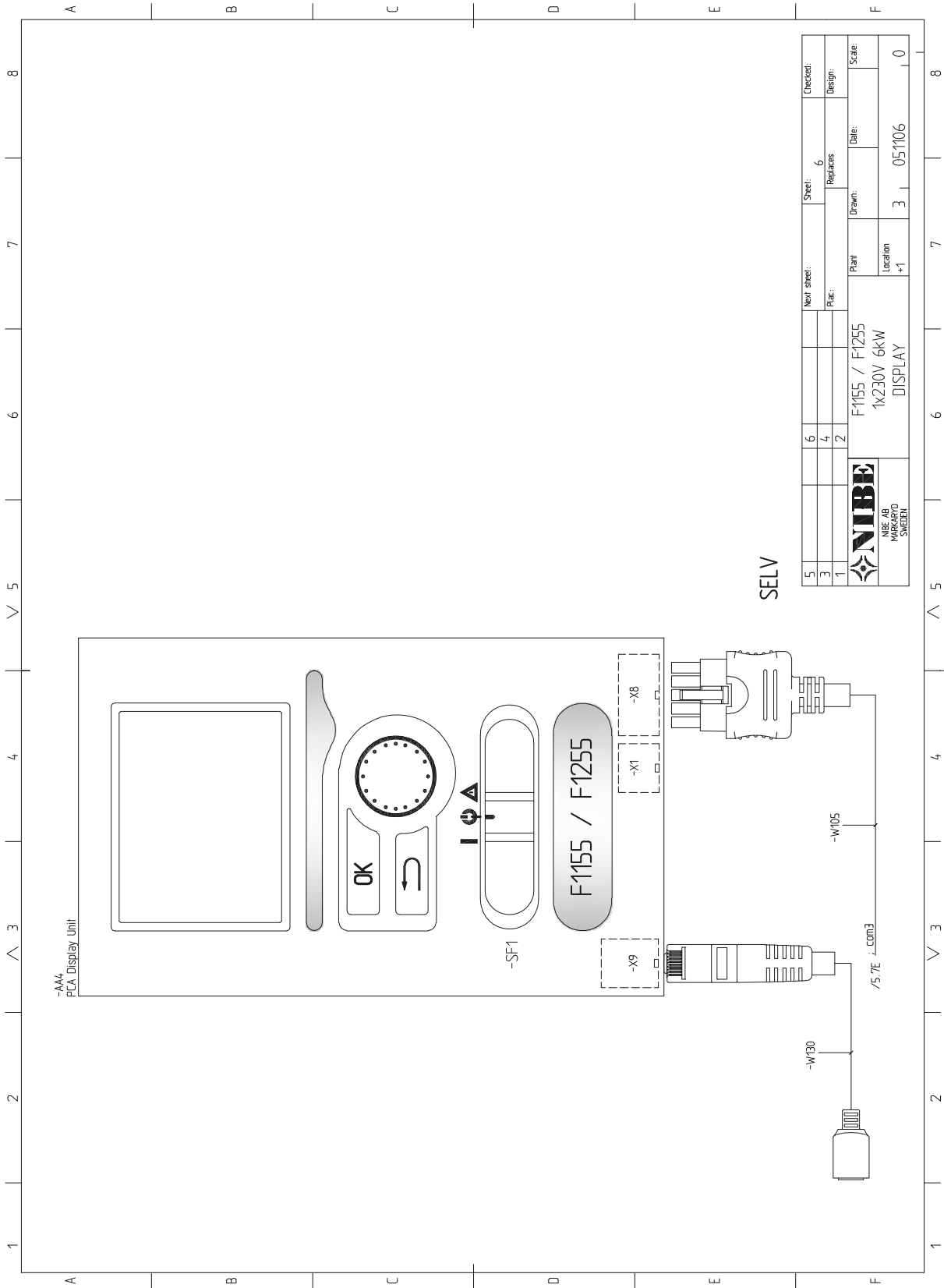
SELV





SELV

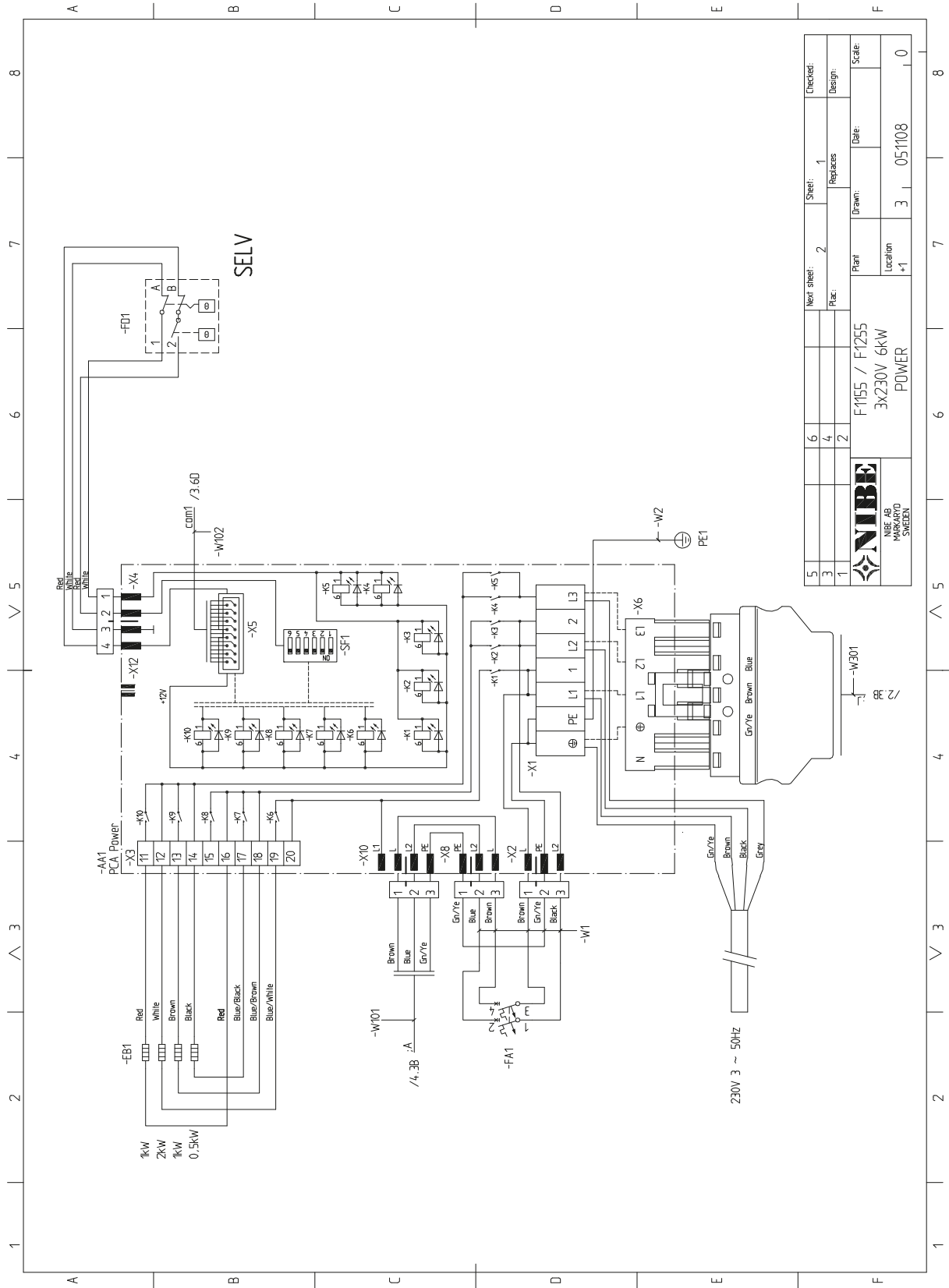
5	Next sheet:	6	Sheet:	5	Checked:
3	Replaces:		Design:		
1	Plant:	F1155 / F1255	Drawn:		Scale:
	Location:	1x230V 6kW	Date:		
	Location:	+1	3	05/1106	0
 NIBE AB HÄMSKARVD SWEDEN					



SELV

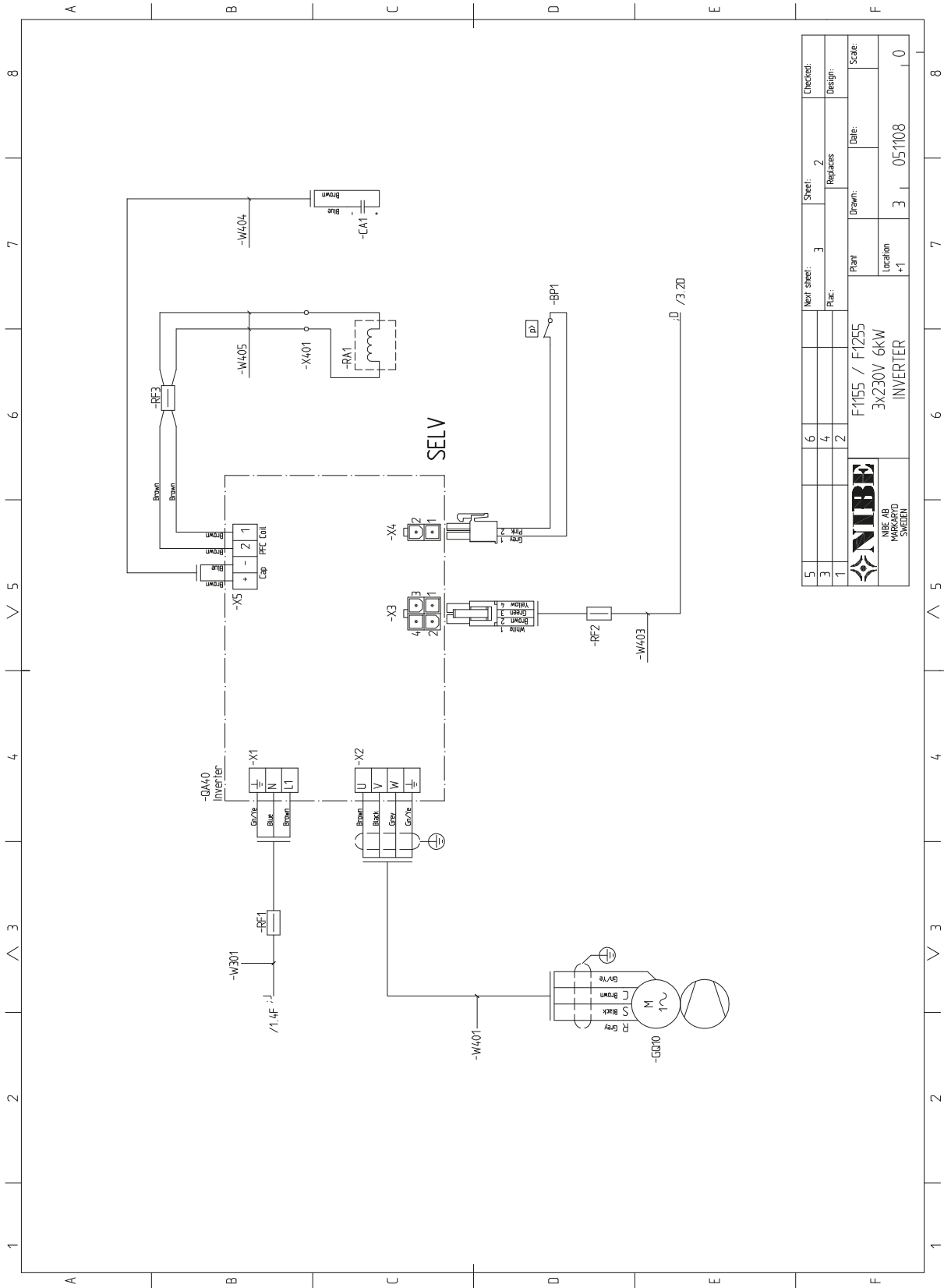
5	Next sheet:	6	Sheet:	6	Checked:	
3	Replaces:	4	Replaces:	6	Design:	
1		2	Drawn:		Date:	
NIBE NIBE AB SE-141 86 SWEDEEN		F1155 / F1255		Plant:	Scale:	
		1x230V 6KW		Location:	+1	
		DISPLAY		3	05/1106	0

3x230V F1155-6/F1255-6

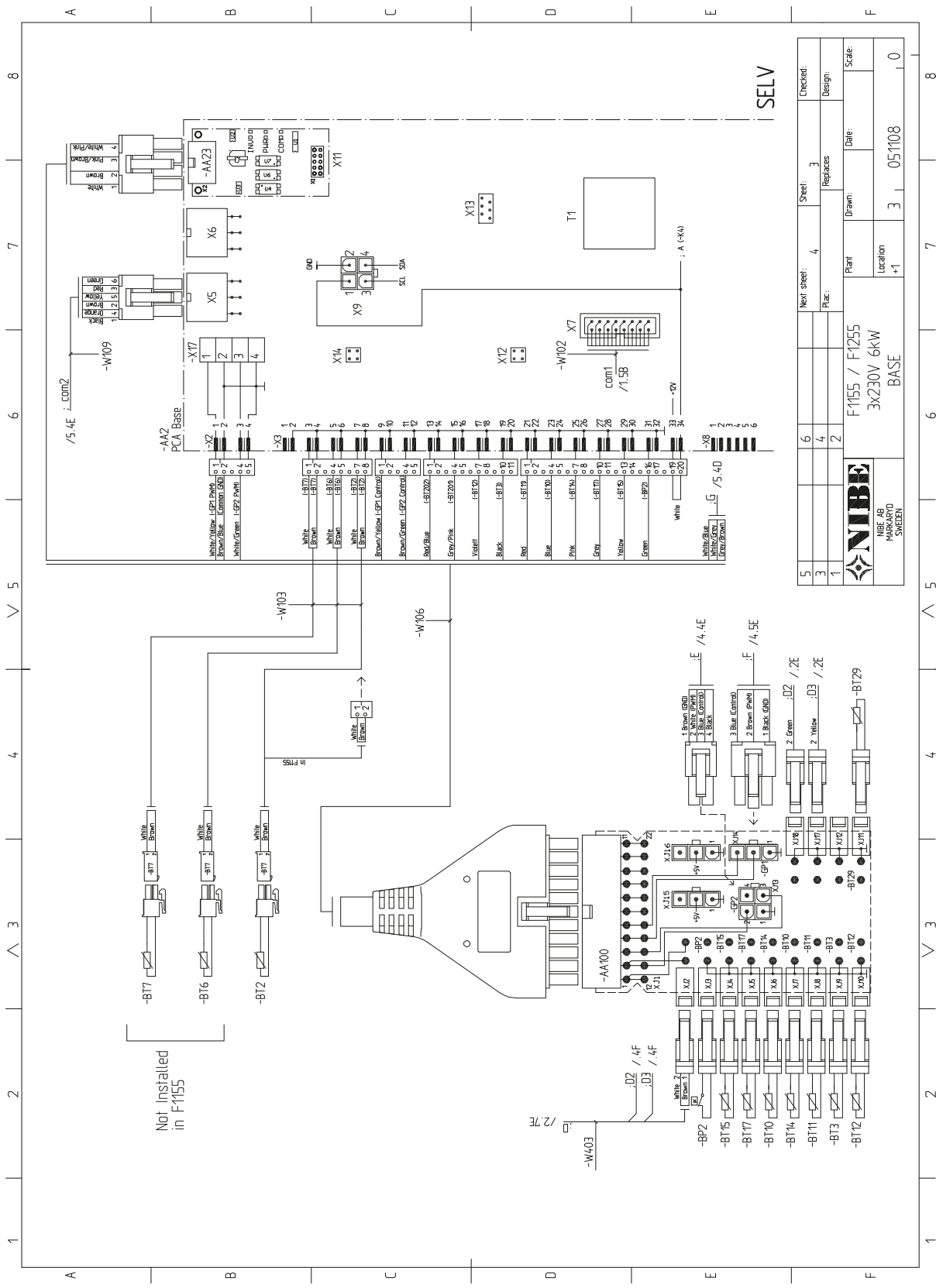


5	6	Next sheet:	2	Sheet:	1	Checked:	
3	4	Replaces:		Replaces		Design:	
1	2	Plant:	F1155 / F1255	Drawn:		Date:	
		Location:	3X230V 6kW			Scale:	
			POWER		3	05/1108	0



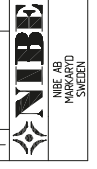


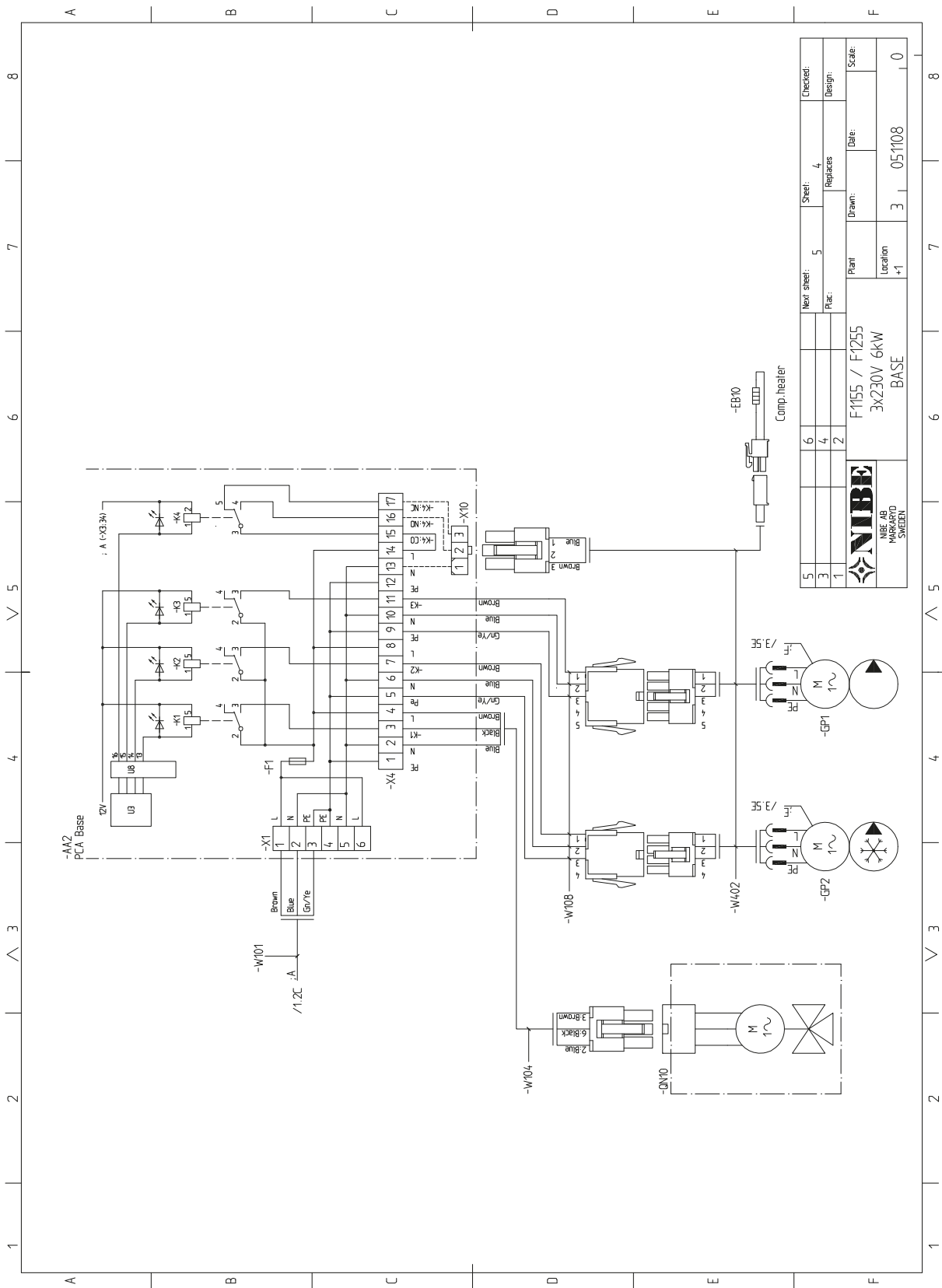
5									
3									
1									
NIBE		F1155 / F1255		Plant		Date:		Scale:	
NIBE AB		3x230V 6kW		Location		Drawn:		Date:	
SWEDEN		INVERTER		+1		3		05/1108	



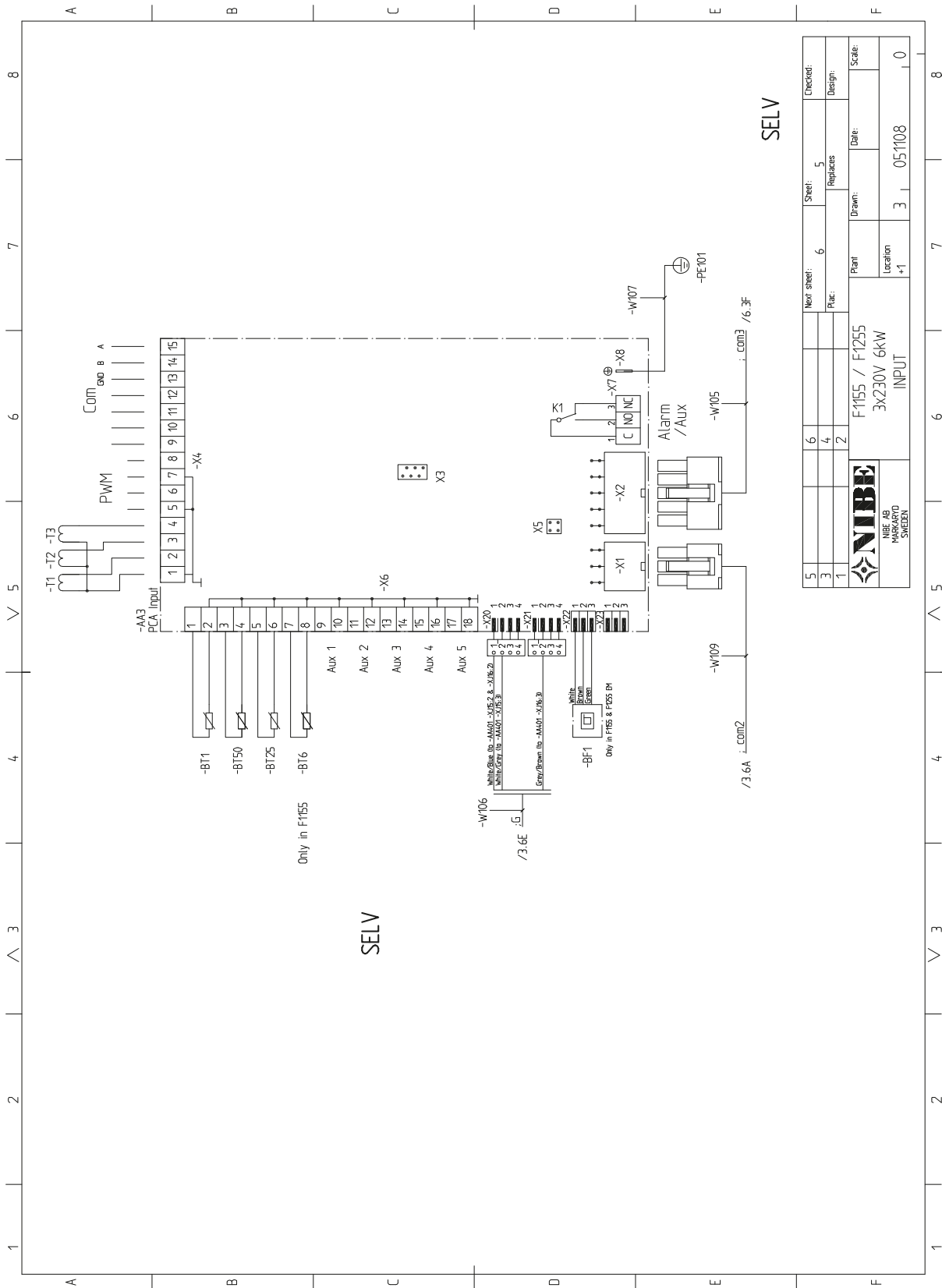
Not installed in F1155

5	6	7	8
3	4	5	6
1	2	3	4
Checked: Design:			
Replaces:			
Date:			
Scale:			
Plant: F1155 / F1255			
Location: +1			
3x230V 6kW			
BASE			
Sheet: 3			
Drawn: 3			
Date: 05/1108			
Scale: 0			



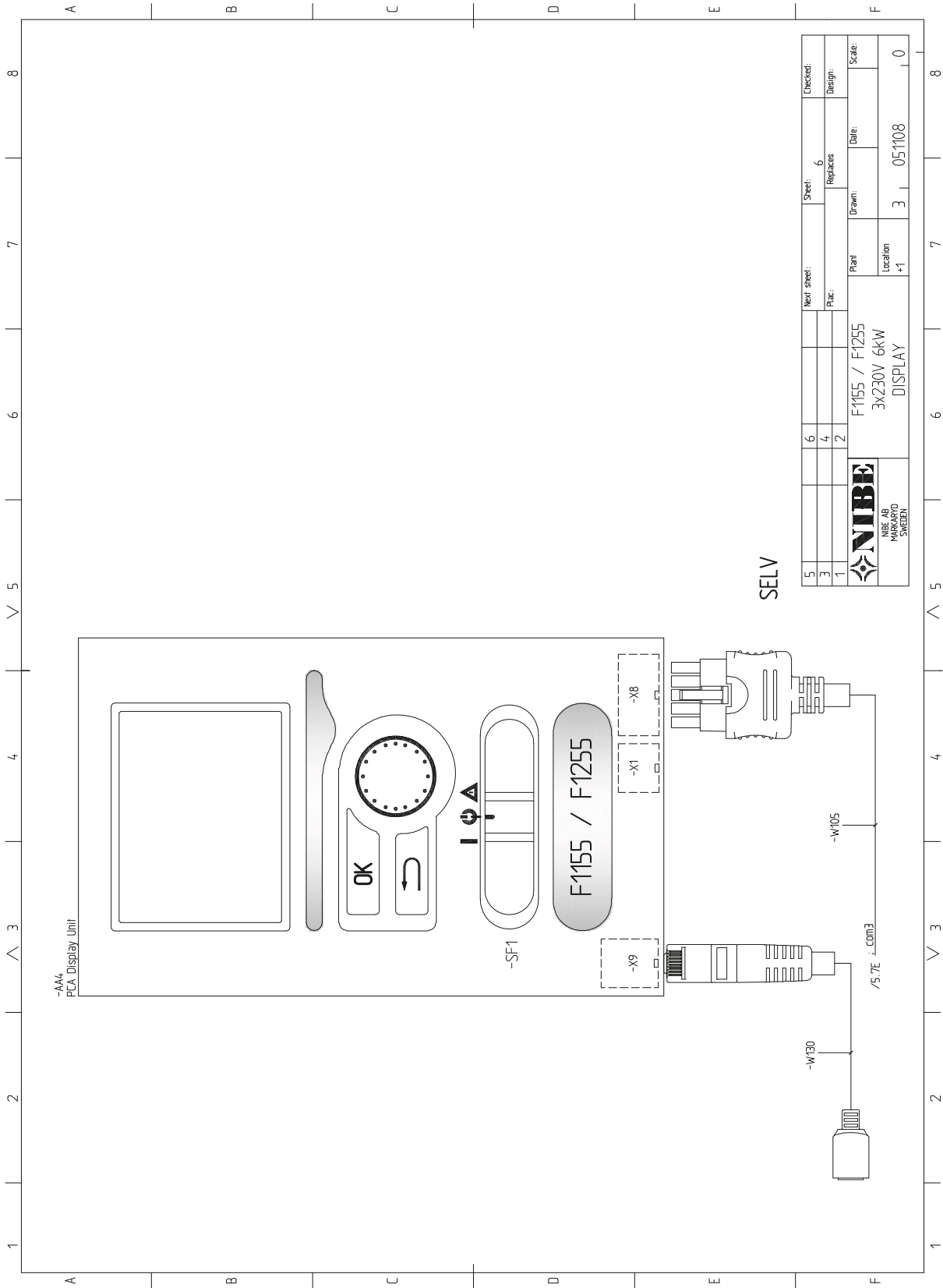


5	Next sheet:	5	Sheet:	4	Checked:
3	Replaces:		Replaces		Design:
1	Plant:	F1155 / F1255		Date:	
	Location:	3x230V 6kW		Scale:	
		BASE			
		3	05/1108		0



5	6	Next sheet:	6	Sheet:	5	Checked:	
3	4	Replaces:		Replaces:		Design:	
1	2	Plant:	F1155 / F1255	Drawn:		Date:	
		Location:	3X230V 6KW			Scale:	
			INPUT				
		Location:	+1	3	05/1108		0

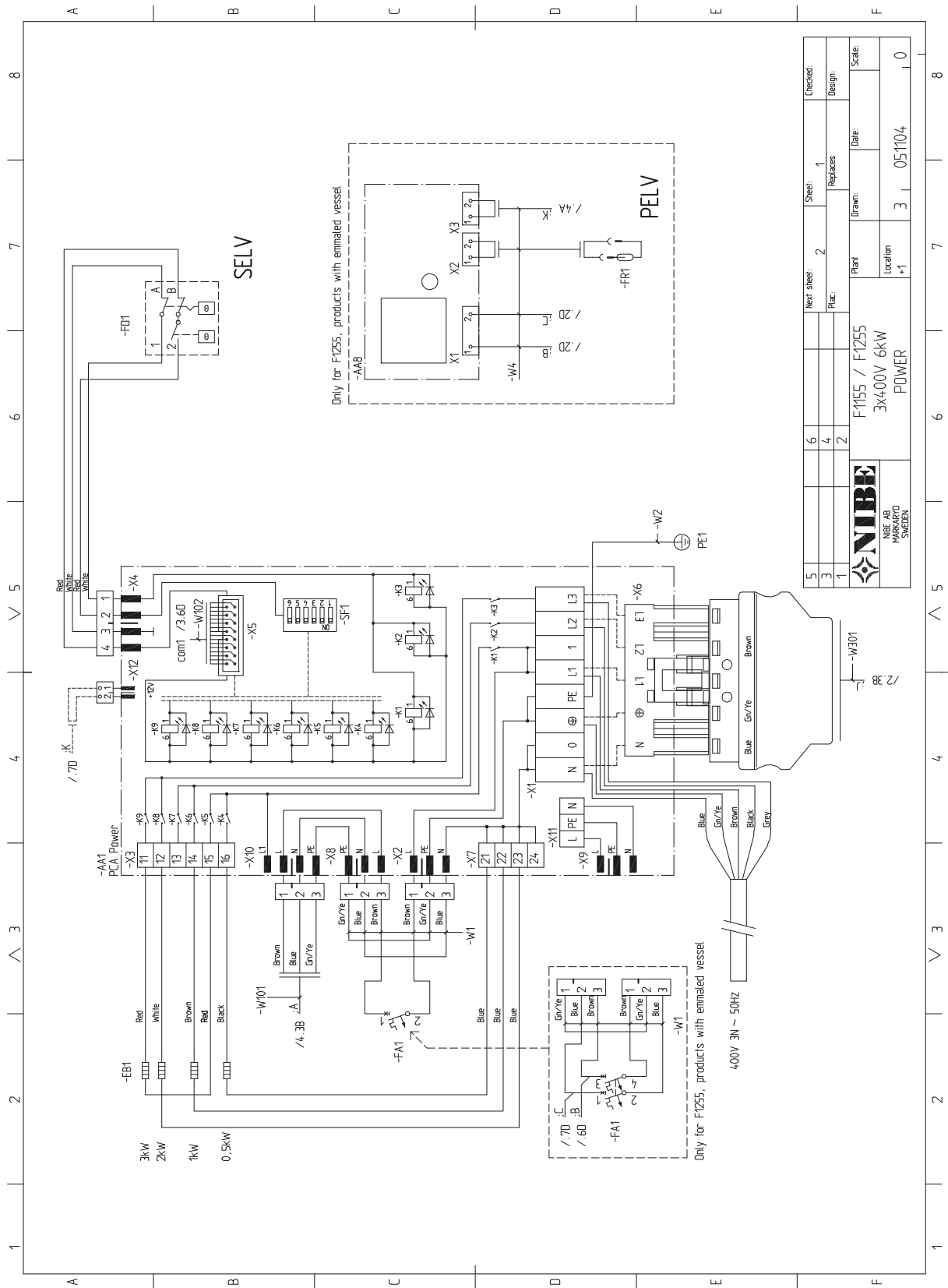




SELV

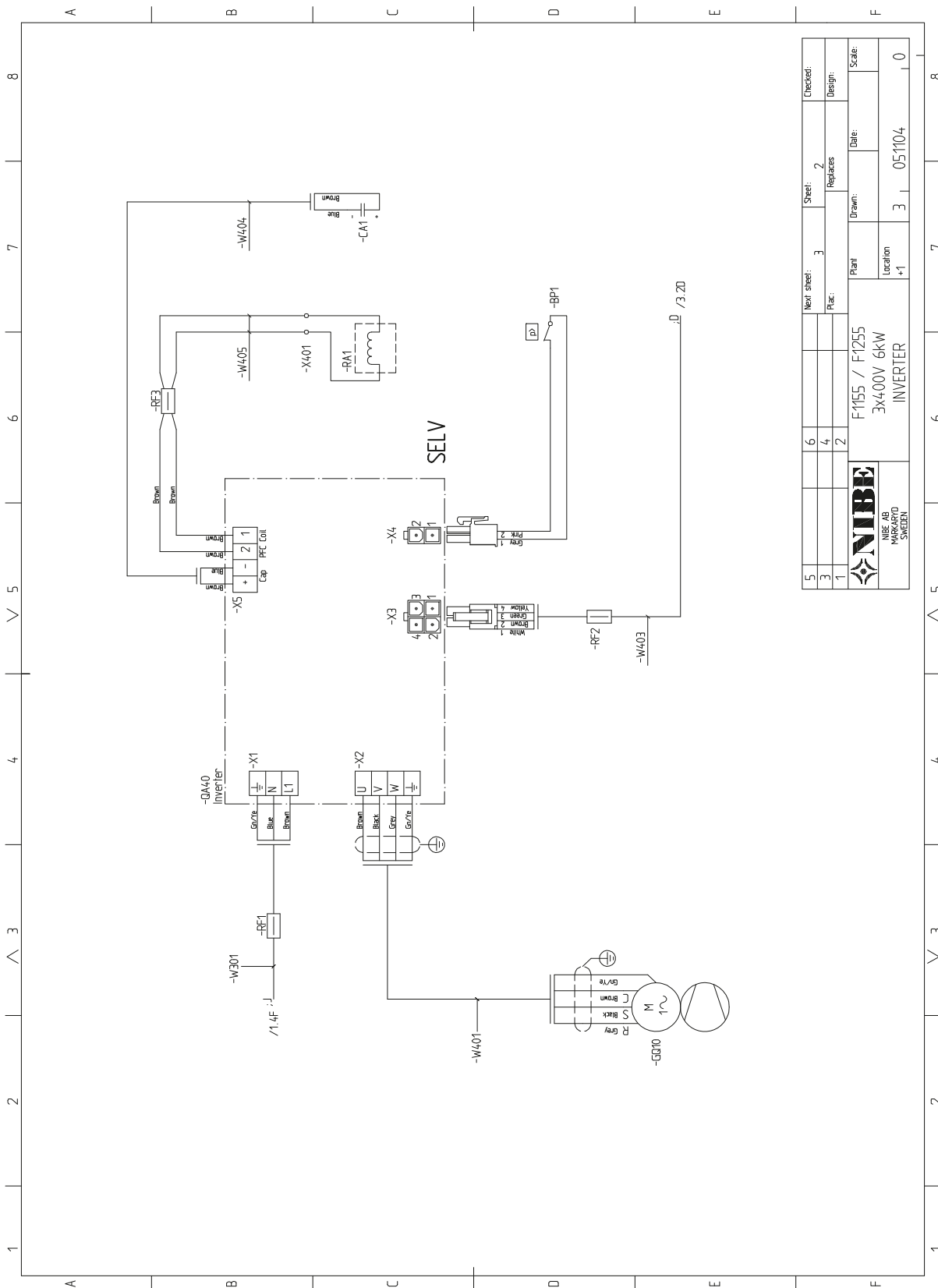
5	Next sheet:	6	Sheet:	6	Checked:	
3	Replaces:	4	Replaces:	6	Design:	
1		2	Drawn:		Date:	
NIBE NIBE AB SE-141 86 SWEDEEN		F1155 / F1255		Plant:	Scale:	
		3x230V 6kW		Location:	+1	
		DISPLAY		Drawn:	3	05/1108
						0


3x400V F1155-6/F1255-6

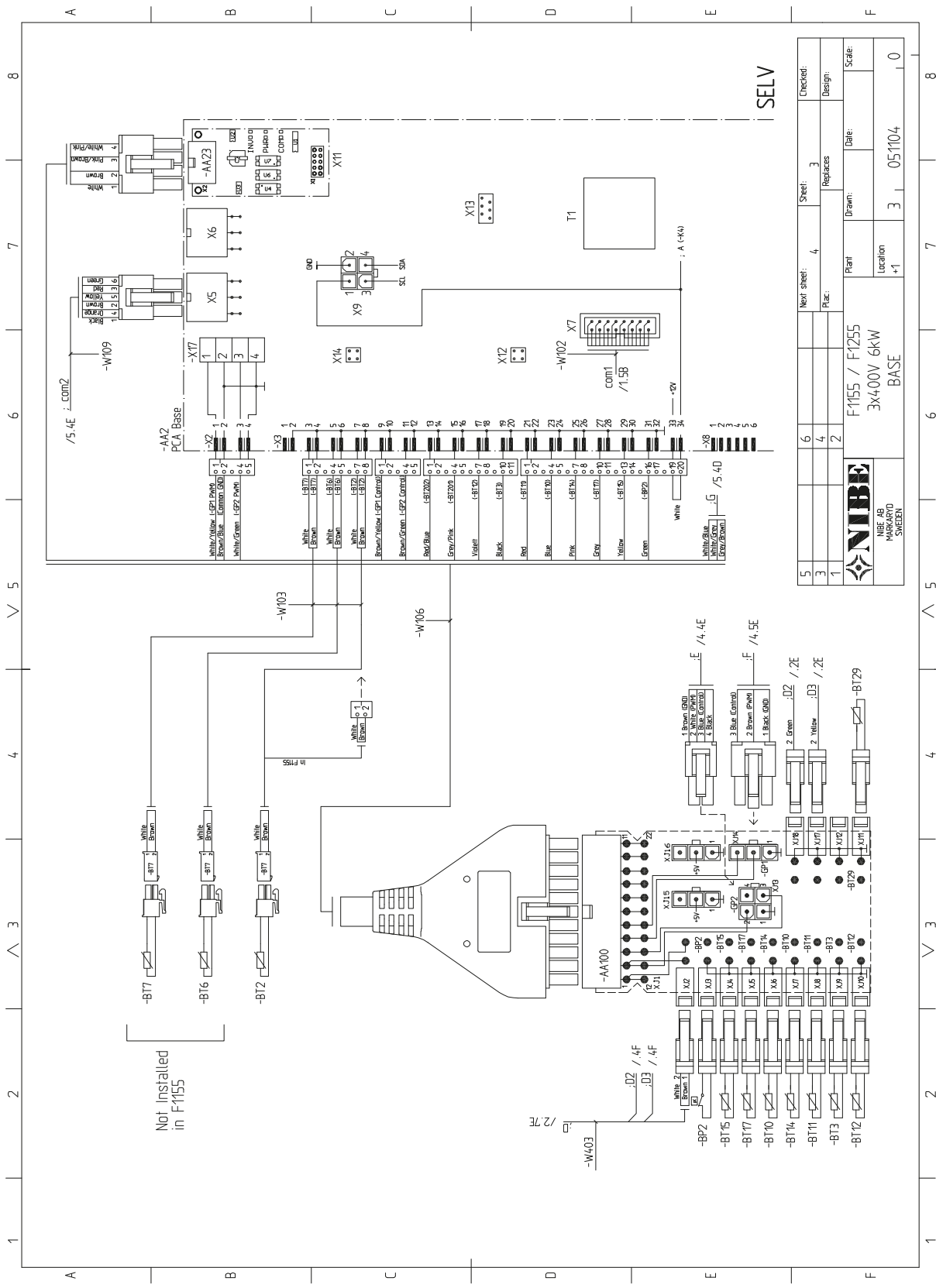


5	6	Next sheet:	2	Sheet:	1	Checked:	
3	4	Replaces:		Design:			
1	2	Plant:	F1155 / F1255	Date:			
		Location:	3x400V 6KW	Scale:			
		Location +1:	POWER	Drawn:	3	05.1104	0



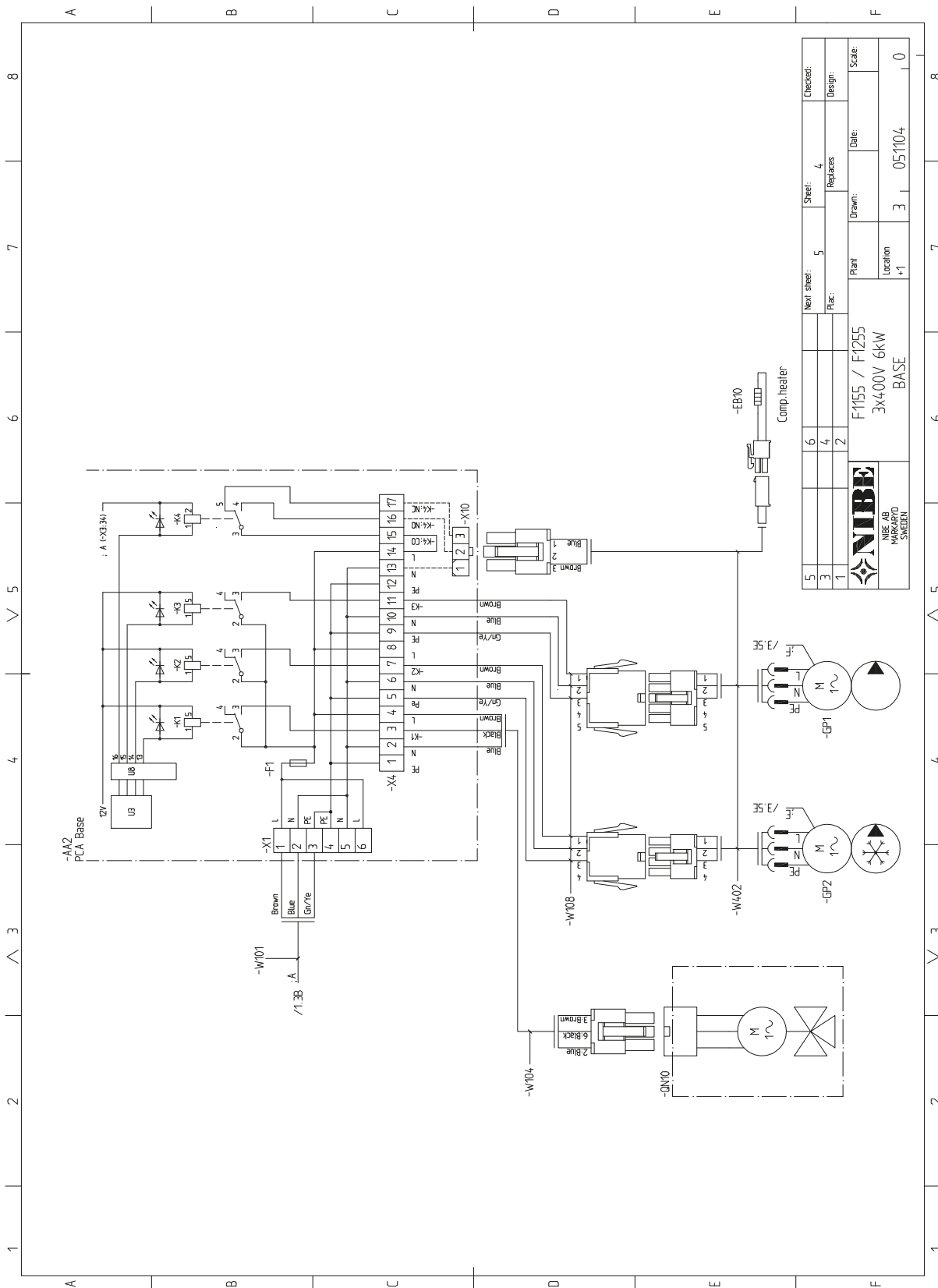


5		6		Next sheet:	3	Sheet:	2	Checked:	
3		4		Replaces:				Design:	
1		2		Plant:	F1155 / F1255	Drawn:		Date:	
 NIBE AB NIBE AB SWEDEN		Location:	+1	Scale:					
		INVERTER		3x400V 6kW					
				3	05/1104				
					0				



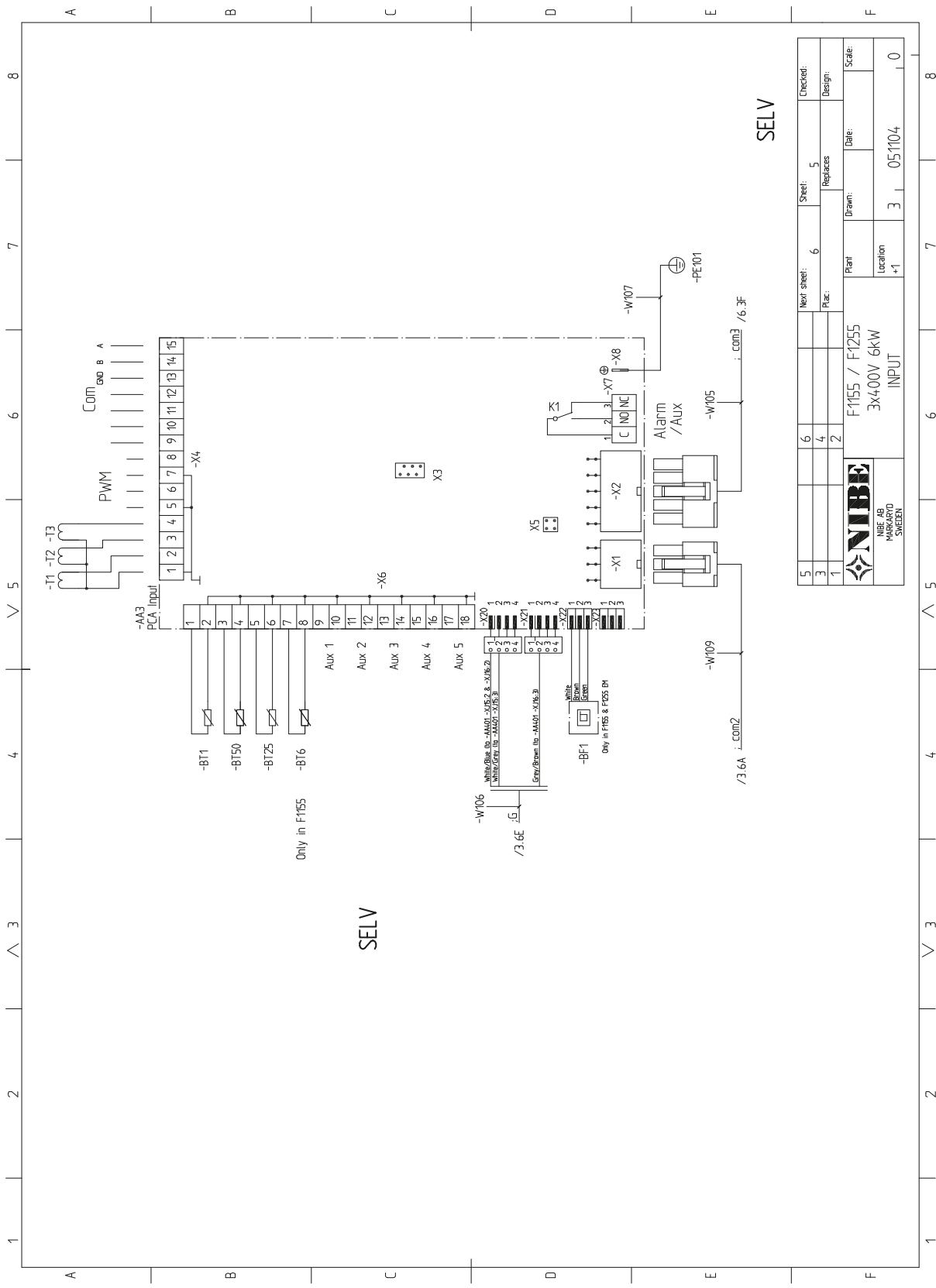
5	6	Next sheet:	3	Checked:
3	4	Replaces:	3	Design:
1	2	Plant:	F1155 / F1255	Scale:
		Location:	3X400V 6kW	
		Location +1:	BASE	
		Drawn:	3	Date:
		Location:	051104	
		Sheet:	3	Scale:
		Replaces:		





5	Next sheet:	5	Sheet:	4	Checked:
3	Replaces:		Replaces:		Design:
1	Plant:	F1155 / F1255	Drawn:		Scale:
	Location:	3x400V 6kW	Date:		
		BASE		3	05/11/04
					0



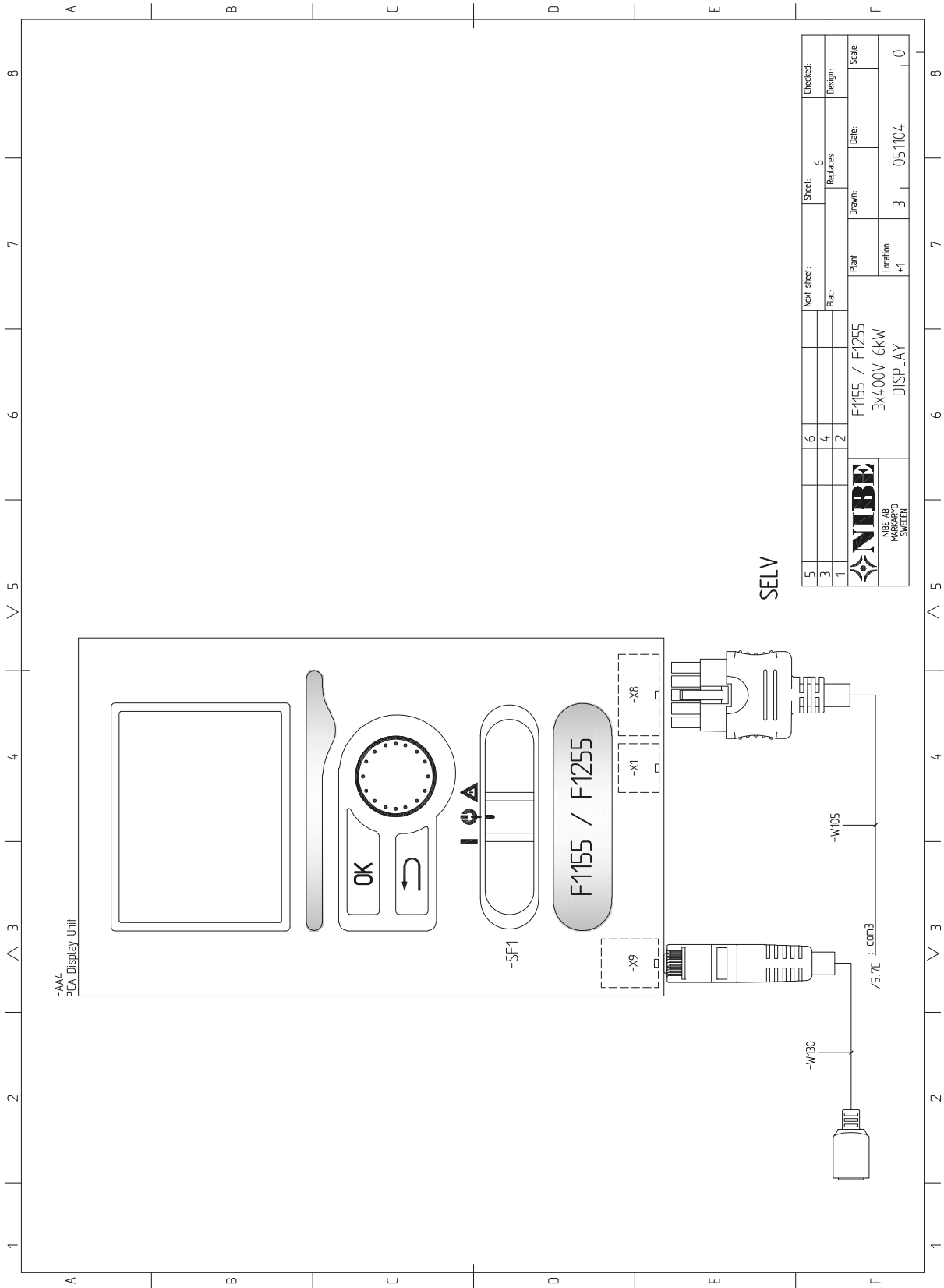


SELV

SELV

5		Next sheet:	6	Sheet:	5	Checked:	
3		Replaces:		Design:			
1		Plant:	F1155 / F1255	Drawn:		Date:	
		Location:	3X400V 6kW			Scale:	
			INPUT				
			+1		3	05/10/04	0

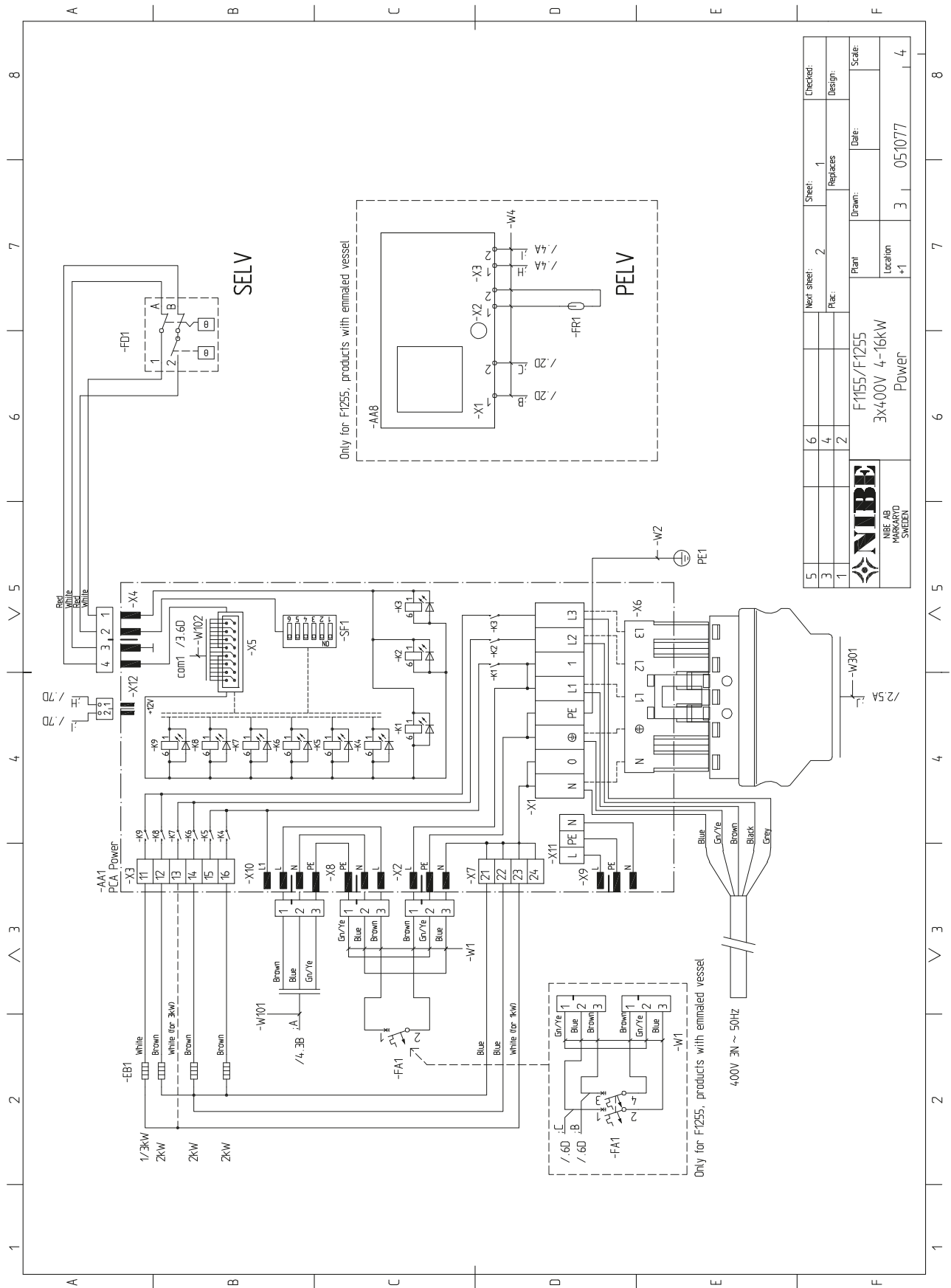




SELV

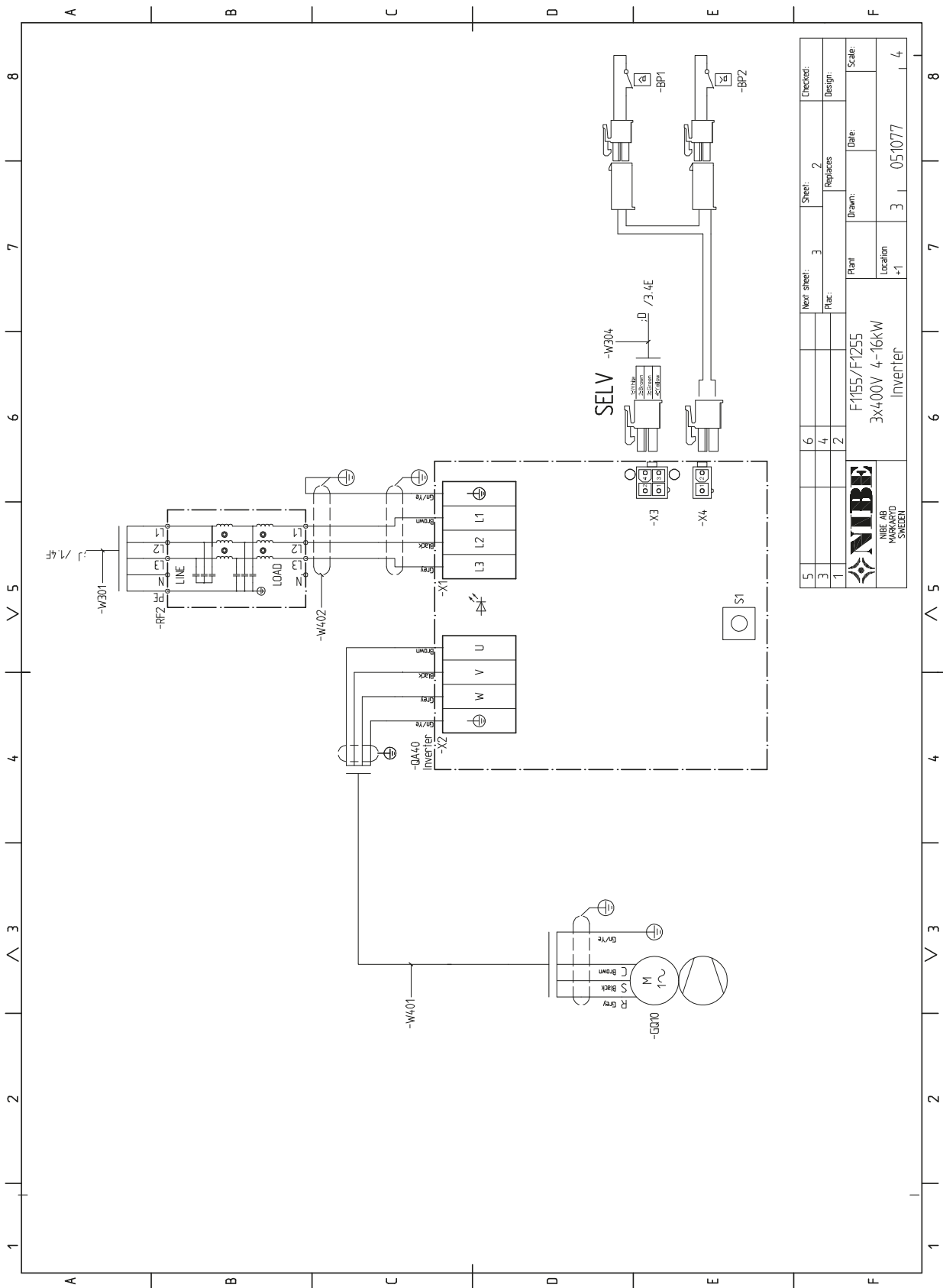
5		6	Next sheet:	Sheet:	Checked:
3		4	Replaces:	6	Design:
1		2		Drawn:	Scale:
 NIBE AB HÄLSJÖ SWEDEN		F1155 / F1255		Date:	
		3x4-00V 6KW		Plant	
		DISPLAY		Location	
				+1	05/1104
					0


3x400V F1155-16/F1255-16

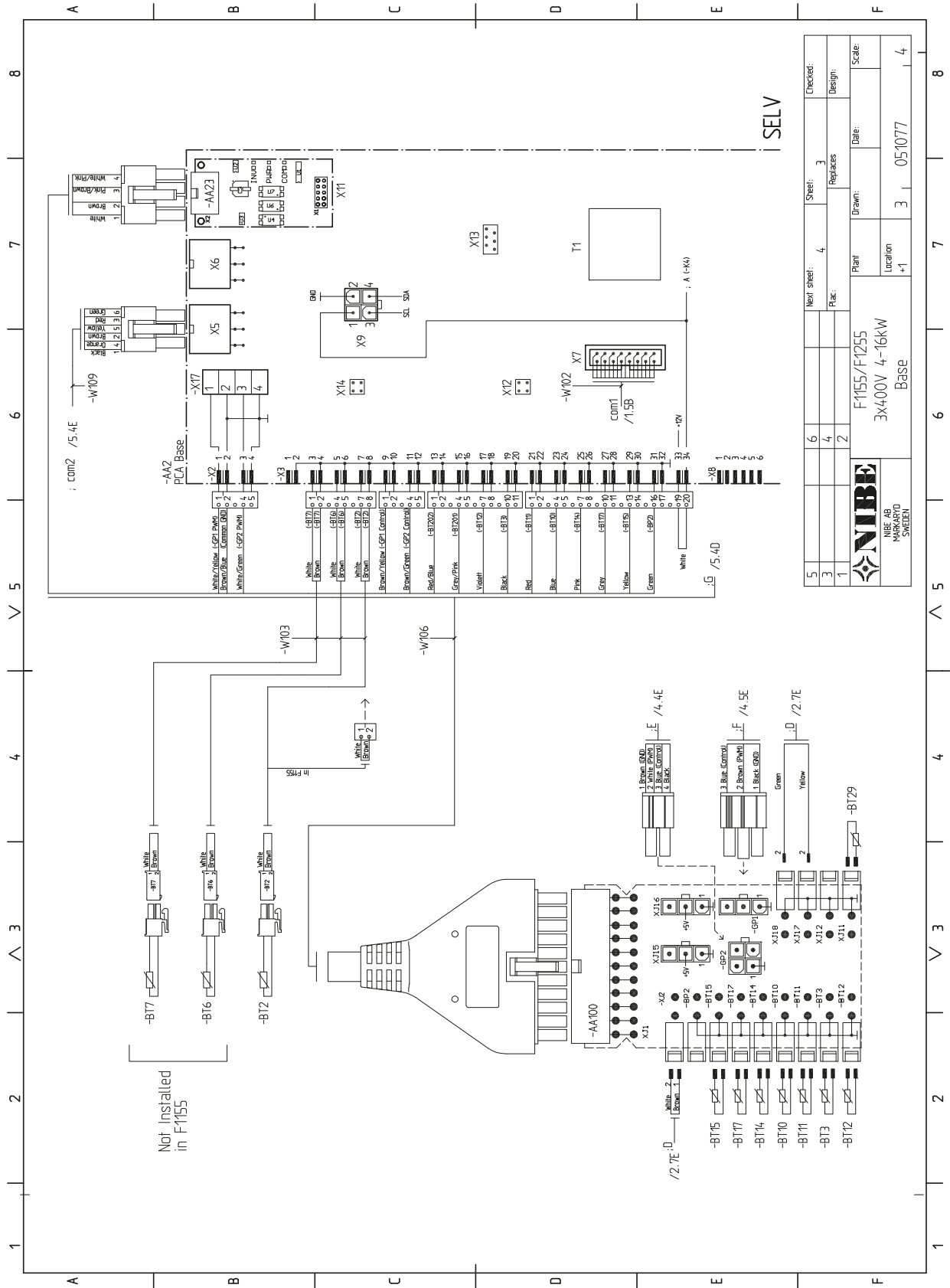


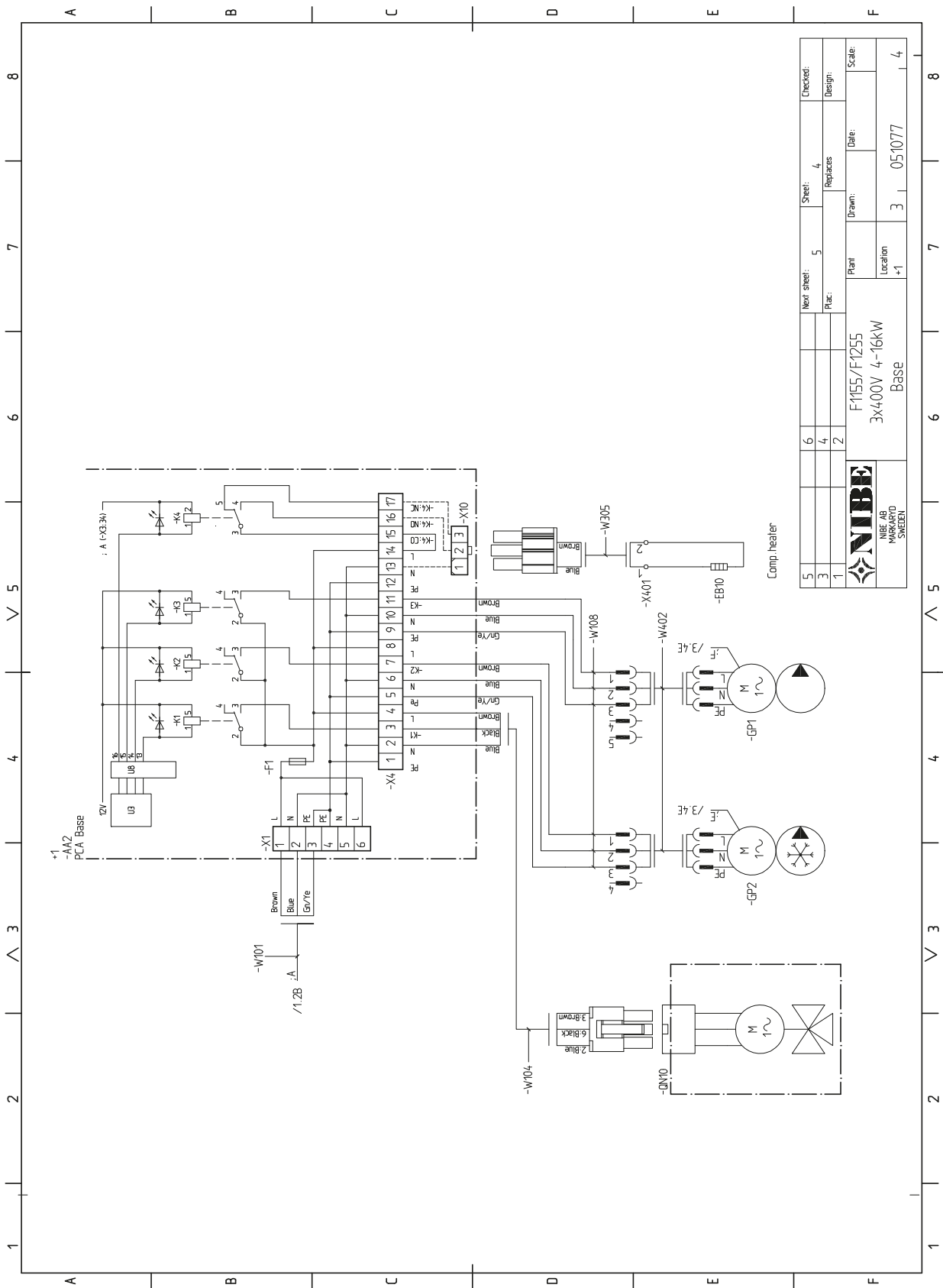
5				Sheet:	1	Checked:	
3				Replaces:		Design:	
1				Plant:		Date:	
				Plant:	F1155/F1255		Scale:
				Location:	3x400V 4-16kW		
				Location:	+1		
				Power:	3		051077
					4		





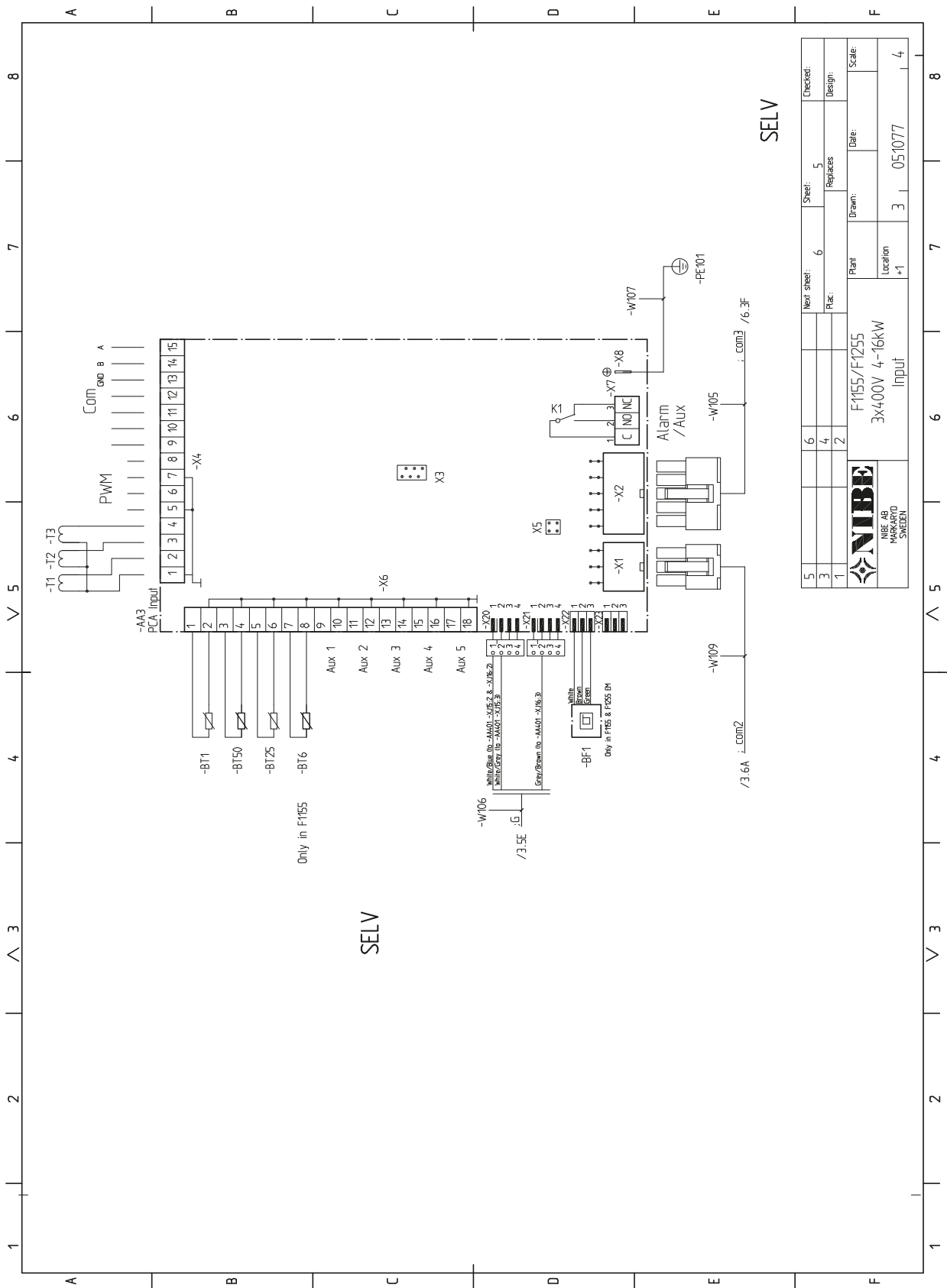
5	6	Next sheet:	3	Sheet:	2	Checked:
3	4	Plat.:		Replaces:		Design:
1	2	Plant	F1155/F1255	Drawn:		Scale:
		Location	+1	Date:	051077	Scale:
		Inverter				



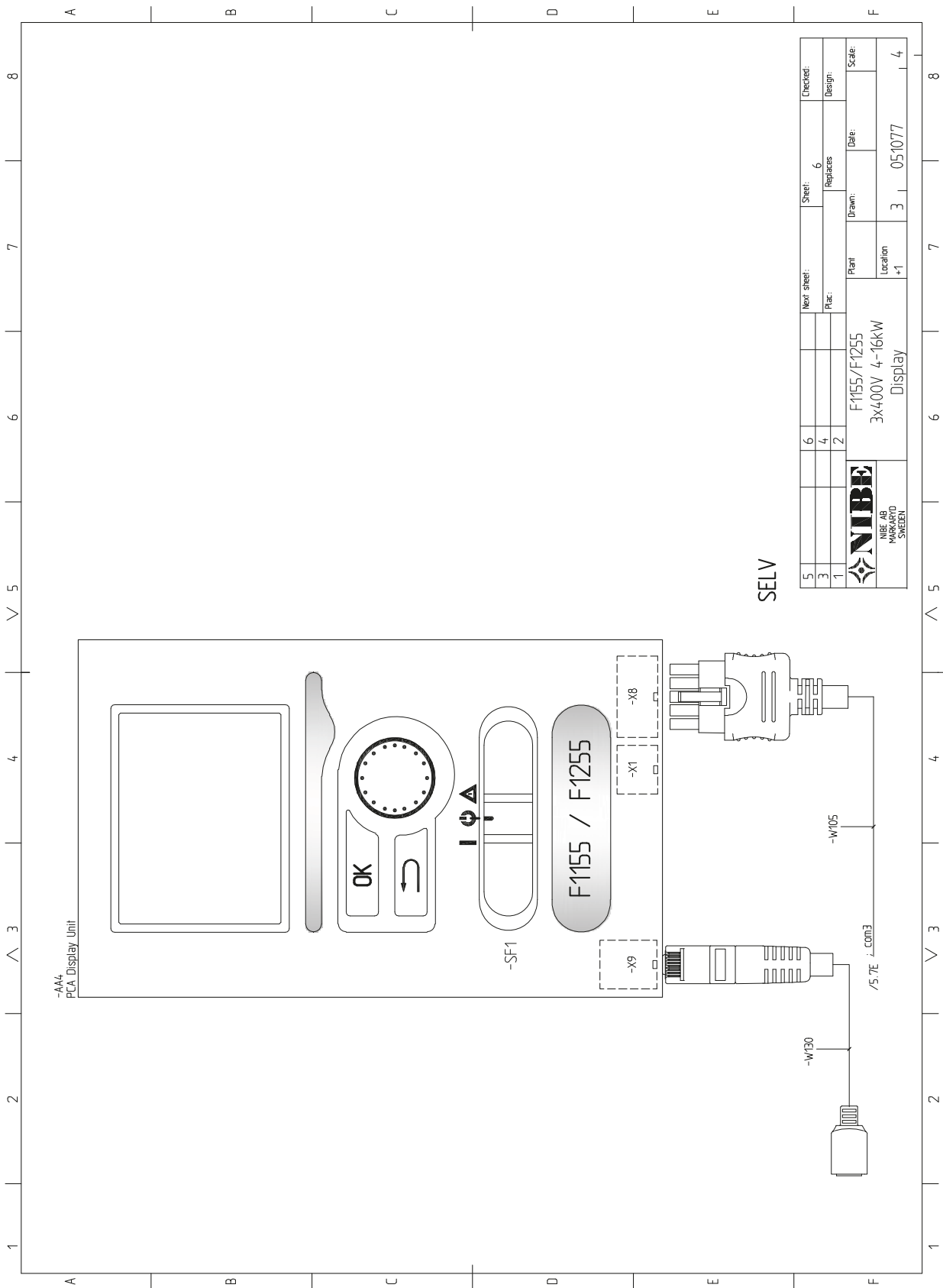


5	6	Next sheet:	5	Sheet:	4	Checked:
3	4	Plat.:		Replaces:		Design:
1	2	Plan	F1155/F1255	Drawn:		Scale:
		Location	3X400V 4-16kW	Date:		
		Location	+1	3	051077	4






5	Next sheet:	6	Sheet:	5	Checked:
3	Plac.:	4	Replaces:	Design:	
1		2	Drawn:	Date:	Scale:
Plant:			F1155/F1255		
Location:			3x400V 4-16kW		
Input:			051077		
NIBE AB KONSTANZ SWEDEN			3 051077		



SELV

5					Next sheet:	Sheet:	Checked:
3	6				Replaces:	6	
1	4				Plac.:	2	Design:
	2				Plant:		Date:
					Location:		Scale:
 NIBE AB MARKARYD SWEDEN		F1155/F1255		3	051077		
		3X400V 4-16KW		Display	+1	4	

NIBE AB Sweden
Hannabadvägen 5
Box 14
SE-285 21 Markaryd
Phone +46 433 73 000
Telefax +46 433 73 190
info@nibe.se
www.nibe.se

